

Appendix G  
Stream Flow Data

Draft

Lake Fort Gibson TMDL Report

Prepared for  
Oklahoma Department of Environmental Quality  
Water Quality Division

May 2015

By  
Dynamic Solutions, LLC



## Appendix G – Stream Flow Data

### List of Tables

Table G- 1 Flow Station Locations in Domain .....	3
Table G- 2 USGS Site 07191500 Information. Period of Record October 1963 to September 2014.....	6
Table G- 3 Pryor Creek 2007 Daily Flow Data (cfs) .....	7
Table G- 4 Pryor Creek 2008 Daily Flow Data (cfs) .....	8

### List of Figures

Figure G- 1 USGS Flow Station Location .....	4
Figure G- 2 USACE Flow Station Location for PRYOR CREEK .....	5

**Table G- 1 Flow Station Locations in Domain**

<b>Organization</b>	<b>Site</b>	<b>Station Number</b>	<b>Latitude</b>	<b>Longitude</b>	<b>Represents</b>
<b>USGS</b>	<b>Neosho River near Chouteau, OK</b>	07191500	36.2294	-95.1825	<b>Upstream Inflow</b>
USACE	<b>Pryor Creek</b>	PYRO2	36.3075	-95.3472	<b>Watershed Inflow</b>

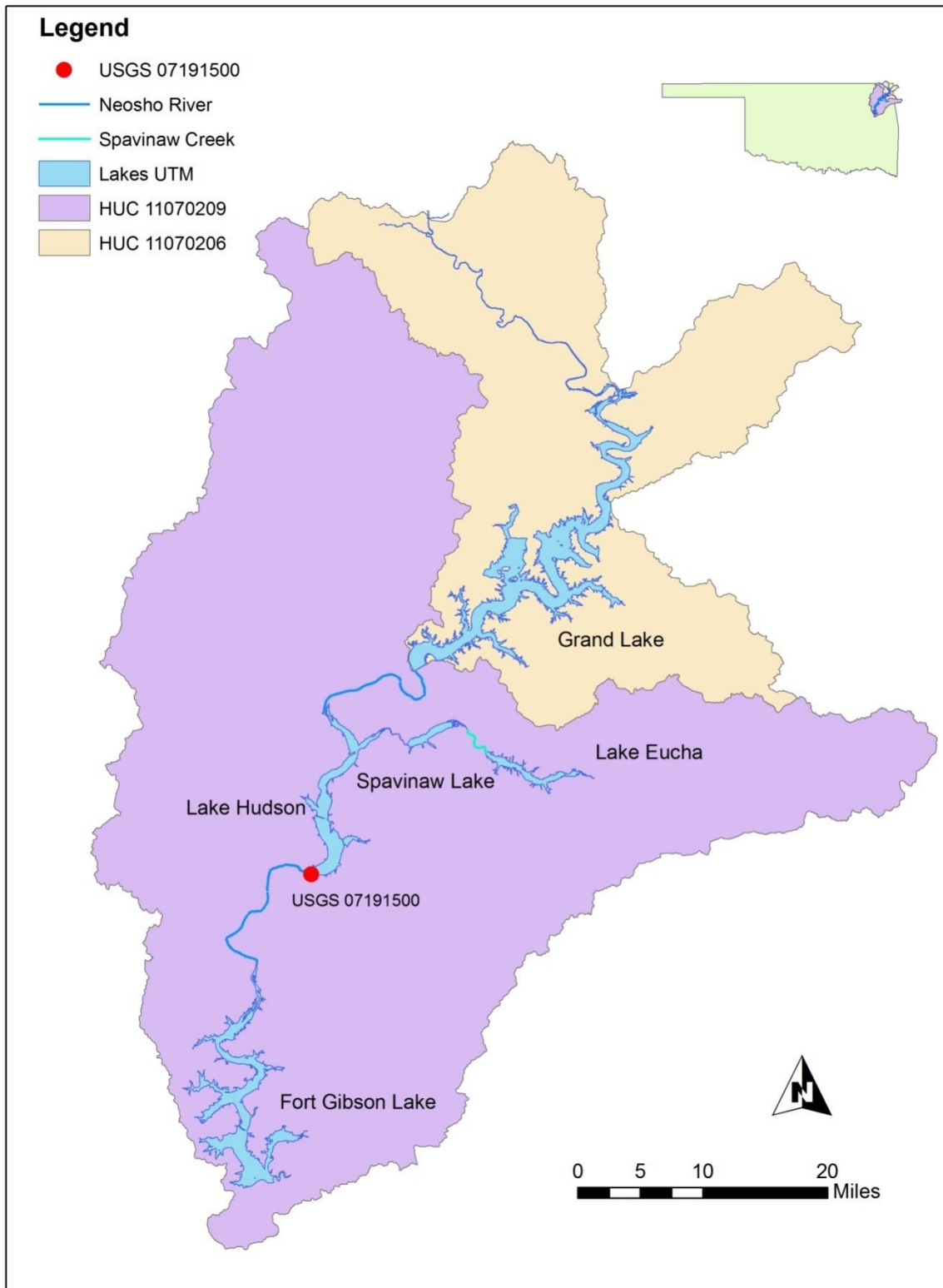


Figure G- 1 USGS Flow Station Location

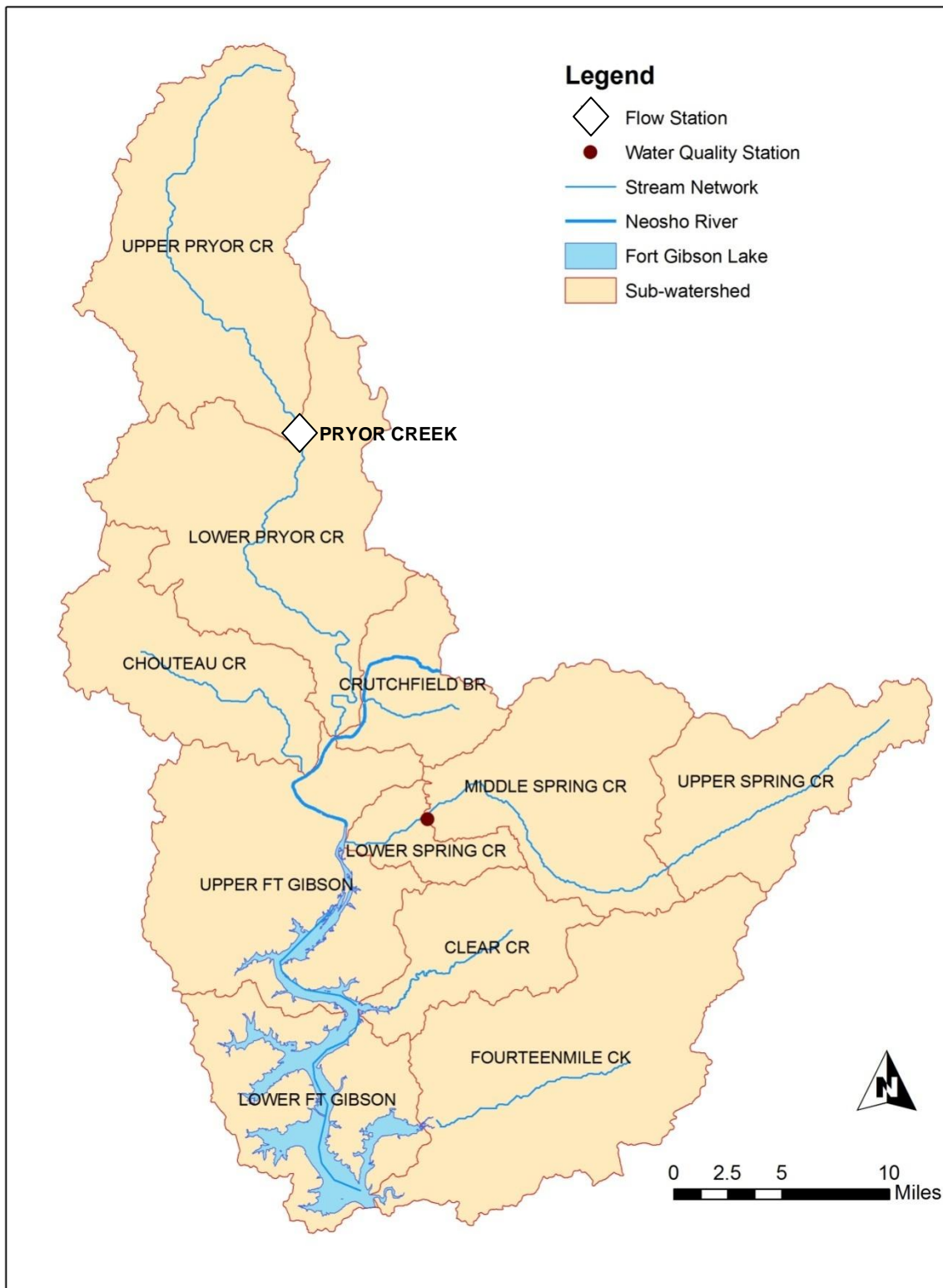


Figure G- 2 USACE Flow Station Location for PRYOR CREEK

**Table G- 2 USGS Site 07191500 Information. Period of Record October 1963 to September 2014.**

<b>Site 07191500</b>	<a href="http://waterdata.usgs.gov/ok/nwis/inventory/?site_no=07191500&amp;agency_cd=USGS">http://waterdata.usgs.gov/ok/nwis/inventory/?site_no=07191500&amp;agency_cd=USGS</a>										
<b>Monthly Average Flows (cfs)</b>											
<b>Jan</b>	<b>Feb</b>	<b>Mar</b>	<b>Apr</b>	<b>May</b>	<b>Jun</b>	<b>Jul</b>	<b>Aug</b>	<b>Sep</b>	<b>Oct</b>	<b>Nov</b>	<b>Dec</b>
<b>6490</b>	<b>7340</b>	<b>12200</b>	<b>13400</b>	<b>13800</b>	<b>13600</b>	<b>8880</b>	<b>5050</b>	<b>4810</b>	<b>5530</b>	<b>7650</b>	<b>7030</b>

Table G- 3 Pryor Creek 2007 Daily Flow Data (cfs)

Day	Jan	Feb	Mar	Apr	May	Jun	Jul	Aug	Sep	Oct	Nov	Dec
1	236	41	41	85	16	63	1472	42	6	4	8	8
2	93	40	36	64	16	1349	1913	106	5	3	8	8
3	59	32	30	42	69	376	1303	34	4	1090	7	7
4	43	35	25	30	710	101	526	20	5	248	6	7
5	35	29	22	23	172	54	163	13	5	65	6	6
6	30	28	19	19	88	34	150	11	4	33	6	6
7	25	29	18	17	4288	23	105	10	5	20	6	6
8	21	30	17	16	23234	12	72	9	12	48	5	7
9	18	27	17	15	18147	26	54	8	213	112	5	7
10	16	24	16	14	925	29	44	8	87	51	4	8
11	14	21	18	14	2489	1376	905	7	35	26	4	869
12	13	20	17	13	1726	6494	294	7	18	16	4	2011
13	-99	110	16	13	366	3951	561	6	12	12	4	1443
14	-99	412	17	216	139	4129	196	6	10	10	4	260
15	-99	122	16	585	95	2605	94	6	9	9	3	129
16	-99	69	16	132	72	633	206	5	8	9	3	100
17	27	56	15	78	58	271	103	5	7	8	3	87
18	21	47	14	58	46	149	56	5	6	32	3	68
19	19	39	13	48	37	110	38	5	6	149	3	59
20	31	36	12	40	30	90	28	5	5	47	4	48
21	431	33	12	33	25	100	189	4	5	23	5	40
22	1100	29	12	27	21	64	451	4	5	15	5	36
23	424	25	14	23	18	1718	177	4	4	17	6	33
24	304	59	35	20	17	3620	124	4	4	96	7	37
25	328	336	48	21	19	3542	58	199	4	49	6	41
26	258	133	33	24	32	608	35	23	4	25	6	37
27	212	74	24	24	29	478	25	10	6	16	6	32
28	204	51	20	24	48	869	19	7	6	12	7	29
29	108	--	18	21	60	1316	14	6	5	11	12	27
30	72	--	23	18	45	793	12	5	5	10	10	29
31	56	--	41	--	37	--	11	5	--	9	--	27

Table G- 4 Pryor Creek 2008 Daily Flow Data (cfs)

Day	Jan	Feb	Mar	Apr	May	Jun	Jul	Aug	Sep	Oct	Nov	Dec
1	24	15	38	381	92	36	34	10	13	12	12	15
2	21	16	35	307	80	439	23	9	10	11	11	15
3	16	19	936	136	291	315	20	8	8	11	11	13
4	15	23	1283	109	147	120	22	8	79	10	10	13
5	14	34	443	106	77	60	35	7	213	10	9	12
6	15	450	215	82	58	38	18	7	65	10	8	12
7	17	326	131	67	102	28	13	7	36	9	502	12
8	66	124	100	709	1144	34	12	6	92	9	216	11
9	187	82	75	1913	2614	2107	450	6	77	8	91	14
10	130	59	64	5033	1161	6961	1550	1201	37	8	55	24
11	76	44	54	7607	371	5734	2393	2738	55	9	54	86
12	53	45	47	3157	207	1911	1163	2072	566	9	134	49
13	38	56	43	678	132	391	2747	417	285	8	116	29
14	31	45	41	359	100	403	2527	164	2913	8	75	21
15	27	37	59	284	88	689	708	86	3510	8	56	19
16	27	31	61	228	85	2004	183	55	2329	10	45	17
17	26	1435	55	178	80	3561	93	39	382	10	37	15
18	26	1878	1624	693	64	2539	59	30	178	10	30	14
19	24	424	6216	770	49	499	39	24	110	10	26	14
20	22	167	4391	341	41	484	28	20	81	9	23	15
21	19	154	1348	200	33	792	21	17	60	9	22	17
22	18	113	402	135	24	322	17	15	47	8	20	17
23	14	98	249	107	21	197	15	34	36	274	18	14
24	13	83	187	1186	24	379	13	158	31	264	17	13
25	14	77	136	2178	24	218	11	33	24	99	16	13
26	13	72	108	1278	23	111	11	15	22	43	16	13
27	12	61	93	352	205	67	11	11	20	29	16	48
28	13	48	82	208	417	58	11	10	17	20	16	615
29	14	41	68	152	166	42	11	10	14	15	16	363
30	15	--	58	114	77	37	12	9	14	13	16	154
31	15	--	64	--	46	--	11	3	--	12	--	94