


Legend
 Site Boundary

Vicinity Map
 GCD Resources, LLC
 Quapaw PC Renewal
 Ottawa County, OK
 Sections 24, 25 T29N R23E

Project No. 453432

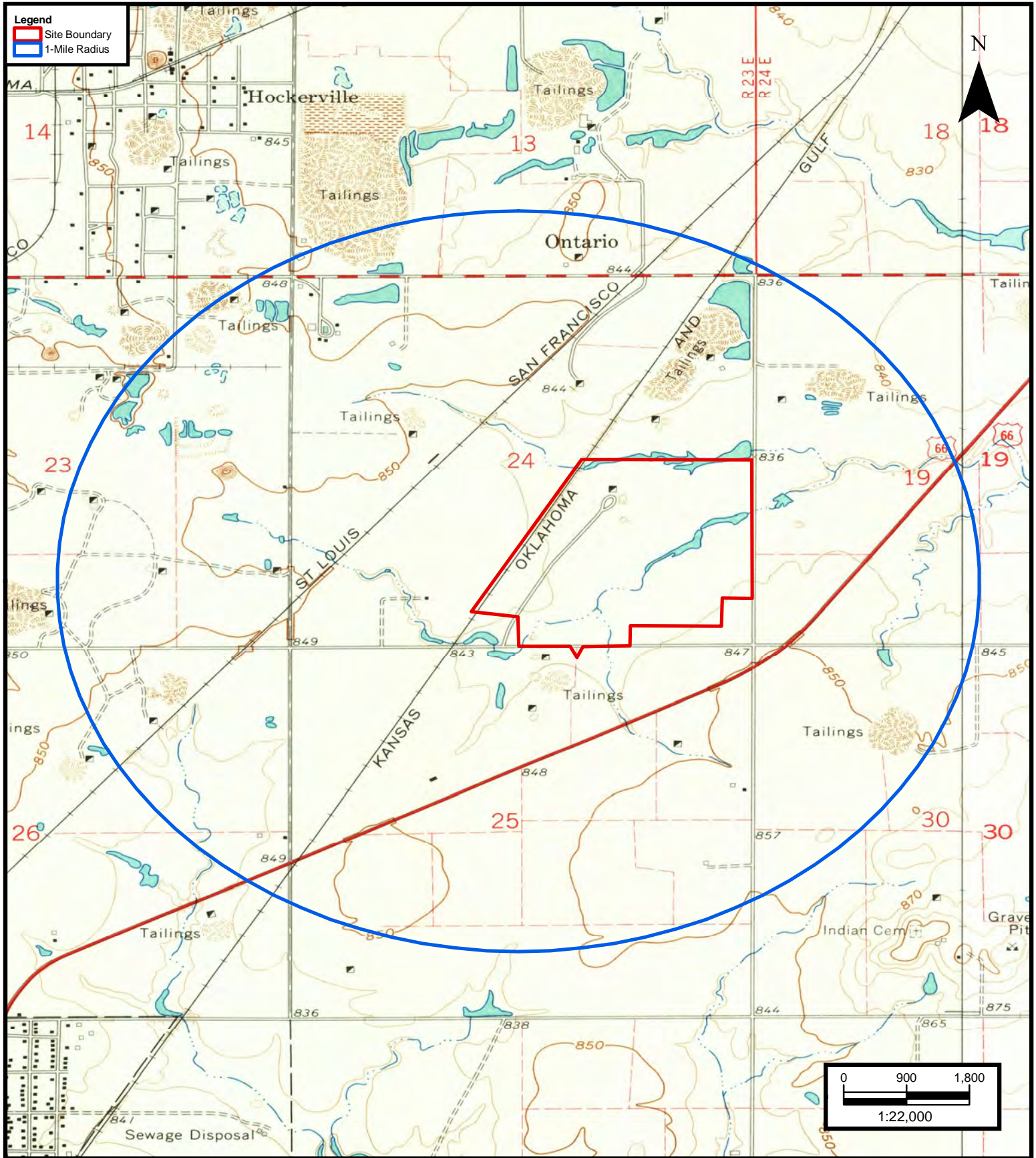


Apex Companies, LLC
 4608 South Garnett Rd., Suite 100
 Tulsa, Oklahoma 74146
 Phone: (918) 610-3543
www.apexcos.com

FIGURE #

1

Service Layer Credits:
 Esri, HERE, Garmin, © OpenStreetMap contributors
 Esri, HERE, Garmin, © OpenStreetMap contributors, and the GIS user community
 Source: Esri, DigitalGlobe, GeoEye, Earthstar Geographics, CNES/Airbus DS, USDA, USGS, AeroGRID,
 IGN, and the GIS User Community



Topographic Map
GCD Resources, LLC
Quapaw PC Renewal
 Ottawa County, OK
 Sections 24, 25 T29N R23E

Project No. 453432



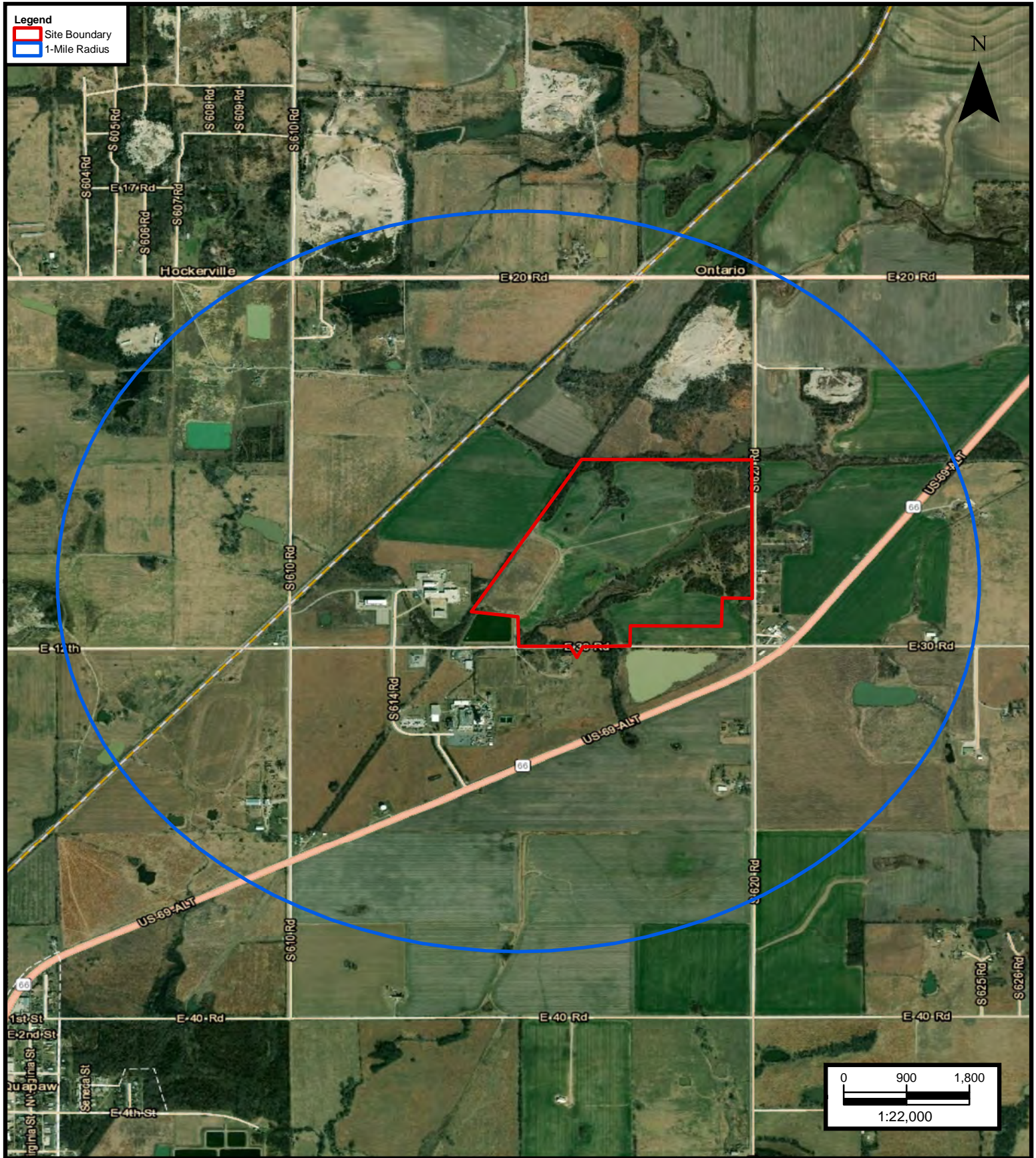
Apex Companies, LLC

4608 South Garnett Rd., Suite 100
 Tulsa, Oklahoma 74146
 Phone: (918) 610-3543
www.apexcos.com

FIGURE #

2

Service Layer Credits:
 Source: Historical Topographic Map Collection courtesy of the U.S. Geological Survey, Esri
 Esri, HERE, Garmin, © OpenStreetMap contributors
 Esri, HERE, Garmin, © OpenStreetMap contributors, and the GIS user community



Aerial Map
 GCD Resources, LLC
 Quapaw PC Renewal
 Ottawa County, OK
 Sections 24, 25 T29N R23E

Project No. 453432

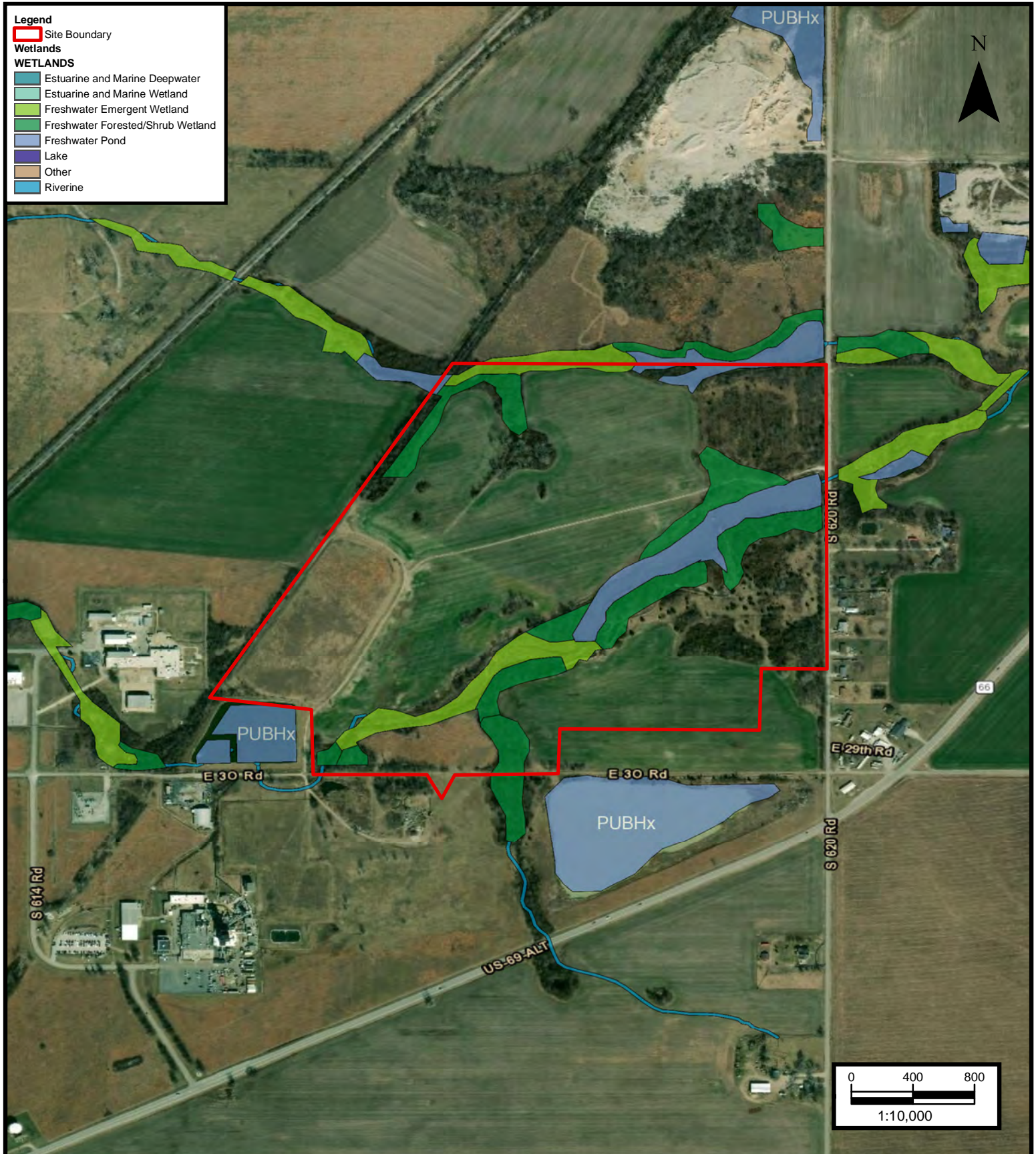


Apex Companies, LLC
 4608 South Garnett Rd., Suite 100
 Tulsa, Oklahoma 74146
 Phone: (918) 610-3543
www.apexcos.com

FIGURE #

3

Service Layer Credits:
 Esri, HERE, Garmin, © OpenStreetMap contributors
 Esri, HERE, Garmin, © OpenStreetMap contributors, and the GIS user community
 Source: Esri, DigitalGlobe, GeoEye, Earthstar Geographics, CNES/Airbus DS, USDA, USGS, AeroGRID,
 IGN, and the GIS User Community



Water Resources Map
GCD Resources, LLC
Quapaw PC Renewal
 Ottawa County, OK
 Sections 24, 25 T29N R23E

Project No. 453432



Apex Companies, LLC



4608 South Garnett Rd., Suite 100
 Tulsa, Oklahoma 74146
 Phone: (918) 610-3543
www.apexcos.com

FIGURE #

4



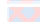
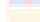
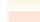


Service Layer Credits:
 U.S. Fish and Wildlife Service, National Standards and Support Team, wetlands_team@fws.gov
 Esri, HERE, Garmin, © OpenStreetMap contributors, and the GIS user community
 Source: Esri, DigitalGlobe, GeoEye, Earthstar Geographics, CNES/Airbus DS, USDA, USGS, AeroGRID,
 IGN, and the GIS User Community

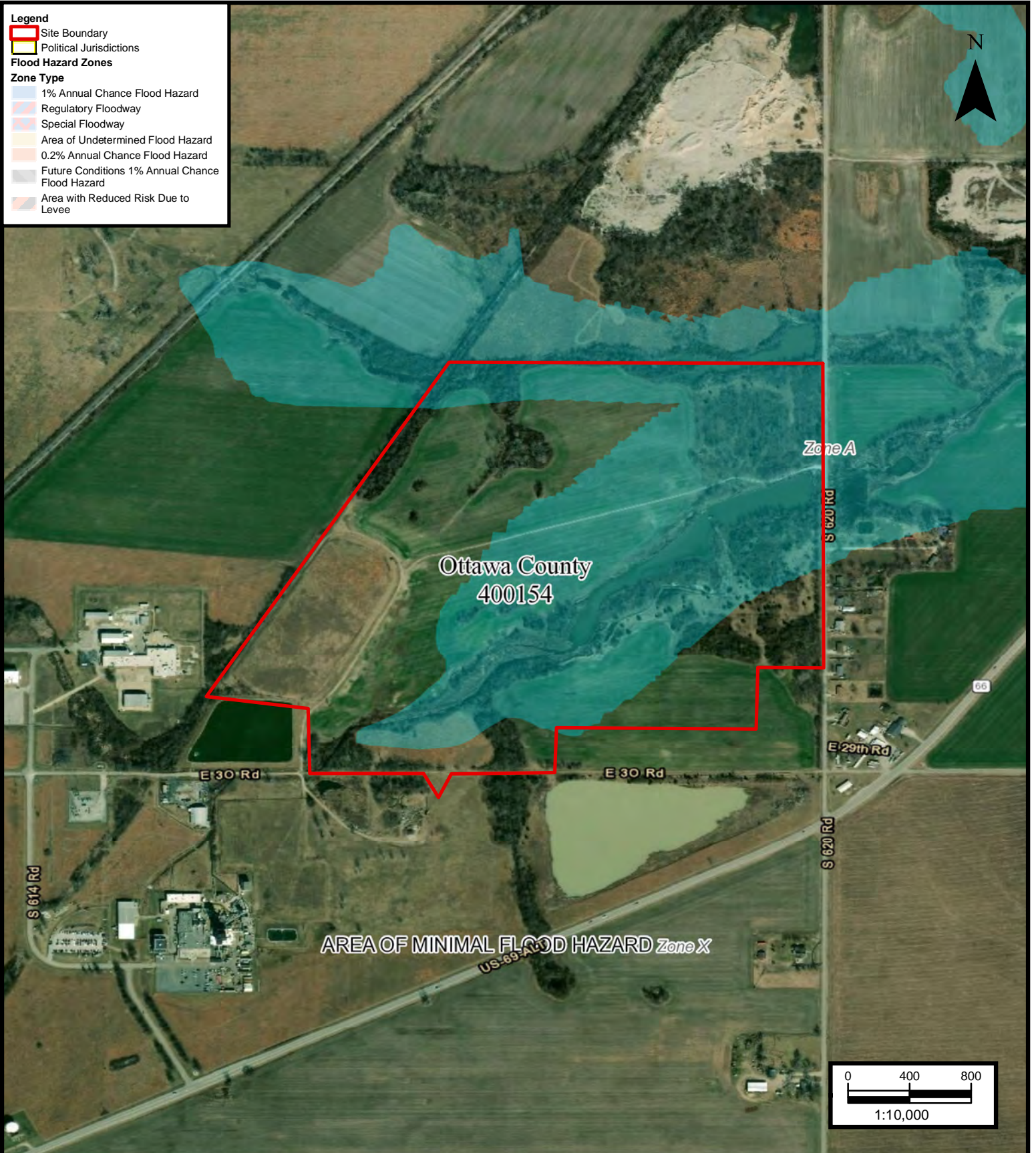
Legend

-  Site Boundary
-  Political Jurisdictions

Flood Hazard Zones

Zone Type

-  1% Annual Chance Flood Hazard
-  Regulatory Floodway
-  Special Floodway
-  Area of Undetermined Flood Hazard
-  0.2% Annual Chance Flood Hazard
-  Future Conditions 1% Annual Chance Flood Hazard
-  Area with Reduced Risk Due to Levee



Flood Plain Map eff. 8/5/2010
 GCD Resources, LLC
 Quapaw PC Renewal
 Ottawa County, OK
 Sections 24, 25 T29N R23E

Project No. 453432



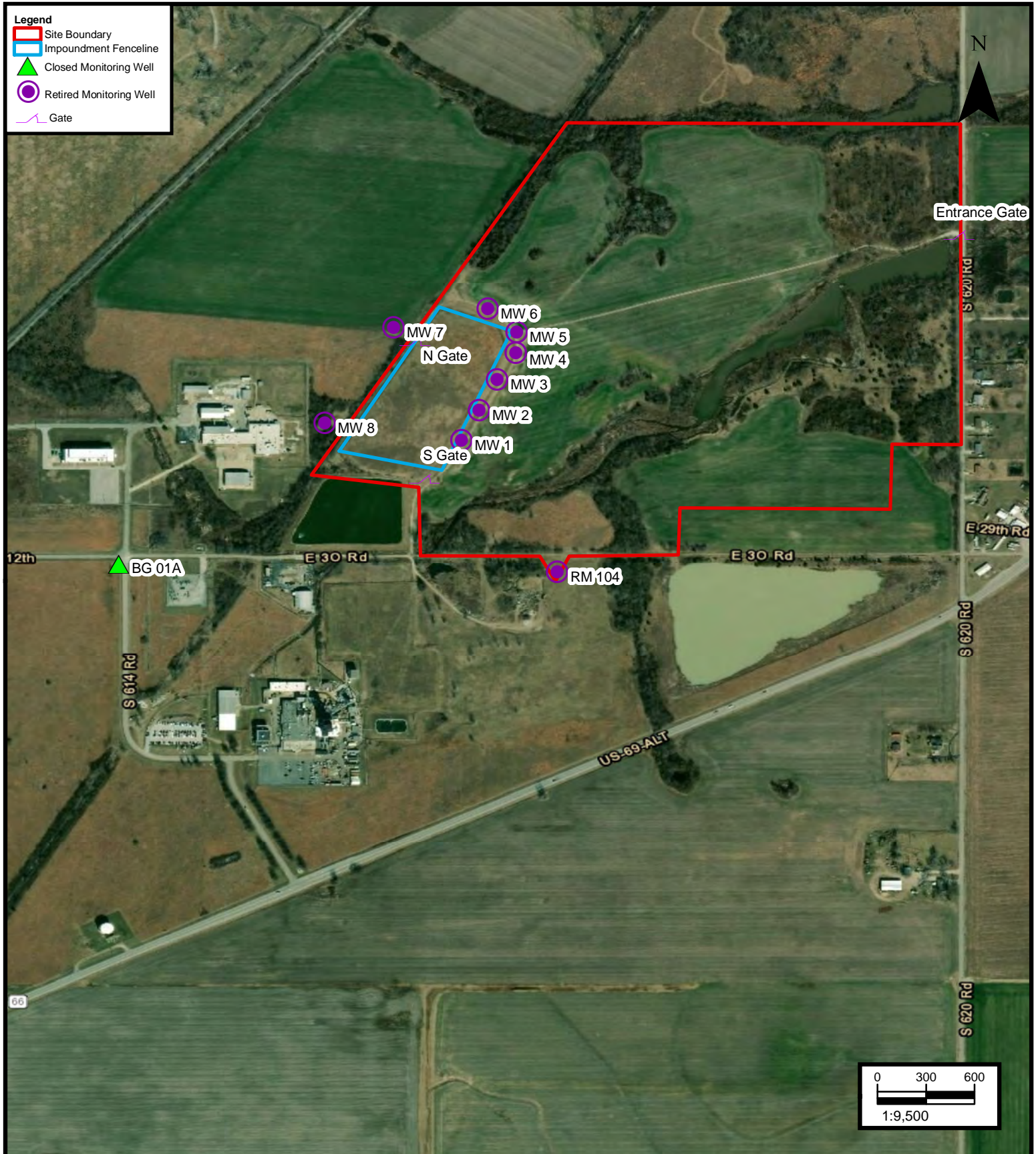
Apex Companies, LLC

4608 South Garnett Rd., Suite 100
 Tulsa, Oklahoma 74146
 Phone: (918) 610-3543
www.apexcos.com

FIGURE #

5

Service Layer Credits:
 Esri, HERE, Garmin, © OpenStreetMap contributors
 Esri, HERE, Garmin, © OpenStreetMap contributors, and the GIS user community
 Source: Esri, DigitalGlobe, GeoEye, Earthstar Geographics, CNES/Airbus DS, USDA, USGS, AeroGRID,
 IGN, and the GIS User Community



Retired Monitoring Wells Map
GCD Resources, LLC
Quapaw PC Renewal
 Ottawa County, OK
 Sections 24, 25 T29N R23E

Project No. 453432



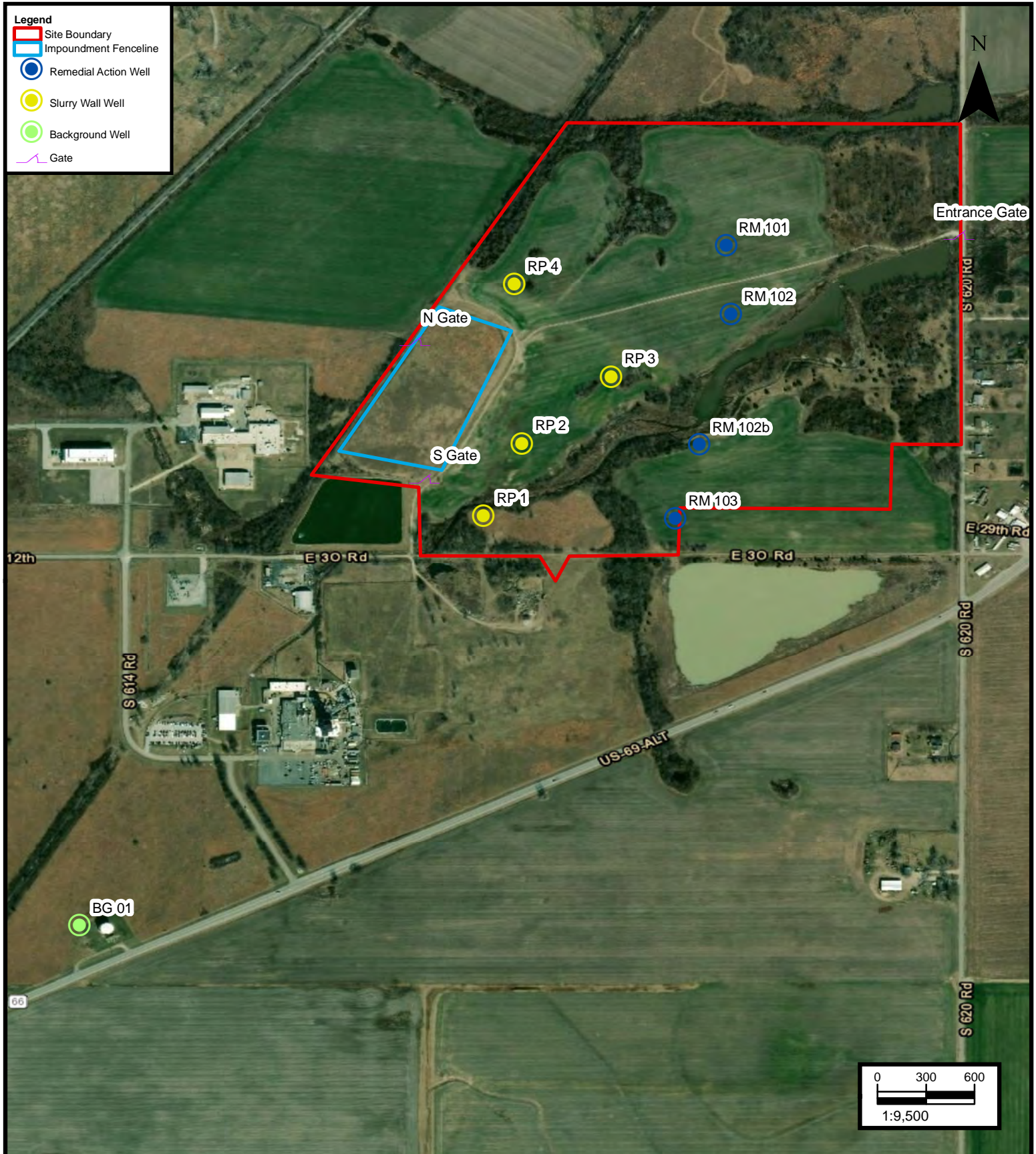
Apex Companies, LLC

4608 South Garnett Rd., Suite 100
 Tulsa, Oklahoma 74146
 Phone: (918) 610-3543
www.apexcos.com

FIGURE #

6

Service Layer Credits:
 Esri, HERE, Garmin, © OpenStreetMap contributors
 Esri, HERE, Garmin, © OpenStreetMap contributors, and the GIS user community
 Source: Esri, DigitalGlobe, GeoEye, Earthstar Geographics, CNES/Airbus DS, USDA, USGS, AeroGRID,
 IGN, and the GIS User Community



Active Monitoring Wells Map
GCD Resources, LLC
Quapaw PC Renewal
 Ottawa County, OK
 Sections 24, 25 T29N R23E

Project No. 453432



Apex Companies, LLC

4608 South Garnett Rd., Suite 100
 Tulsa, Oklahoma 74146
 Phone: (918) 610-3543
www.apexcos.com

FIGURE #

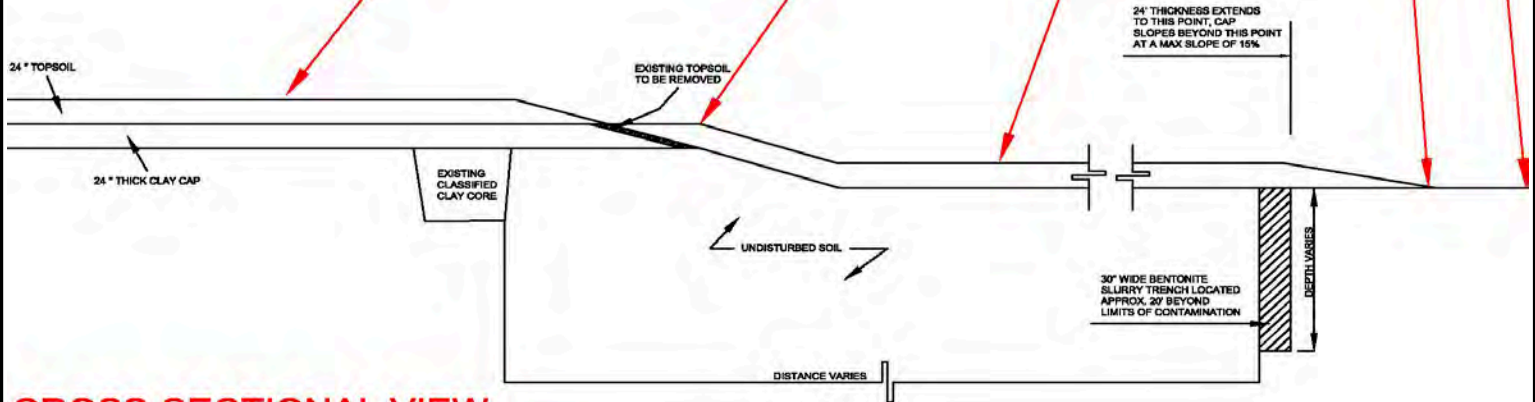
7

Service Layer Credits:
 Esri, HERE, Garmin, © OpenStreetMap contributors
 Esri, HERE, Garmin, © OpenStreetMap contributors, and the GIS user community
 Source: Esri, DigitalGlobe, GeoEye, Earthstar Geographics, CNES/Airbus DS, USDA, USGS, AeroGRID,
 IGN, and the GIS User Community

**PLAN VIEW
NOT TO SCALE**

CLOSED
HAZARDOUS WASTE
SURFACE IMPOUNDMENT

CROSS-SECTIONAL VIEW AREA



**CROSS-SECTIONAL VIEW
NOT TO SCALE**

Sectional View Map
GCD Resources, LLC
Quapaw PC Renewal
Ottawa County, OK
Sections 24, 25 T29N R23E

Project No. 453432



Apex Companies, LLC
4608 South Garnett Rd., Suite 100
Tulsa, Oklahoma 74146
Phone: (918) 610-3543
www.apexcos.com

FIGURE #

8

Service Layer Credits:
Esri, HERE, Garmin, © OpenStreetMap contributors
Esri, HERE, Garmin, © OpenStreetMap contributors, and the GIS user community
Source: Esri, DigitalGlobe, GeoEye, Earthstar Geographics, CNES/Airbus DS, USDA, USGS, AeroGRID,
IGN, and the GIS User Community