

APPENDIX J

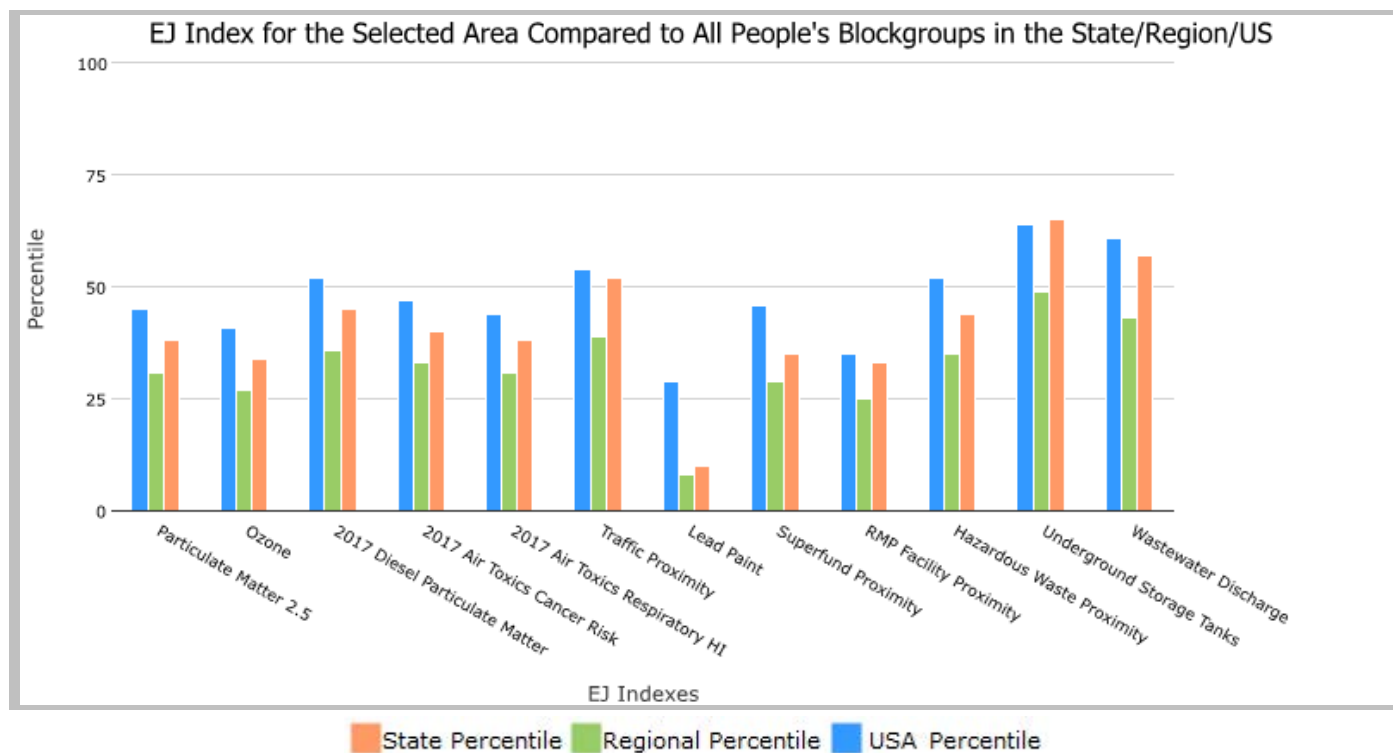
EJSCREEN Reports

10 miles Ring Centered at 34.760019,-98.685383, OKLAHOMA, EPA Region 6

Approximate Population: 3,989

Input Area (sq. miles): 314.03

Selected Variables	State Percentile	EPA Region Percentile	USA Percentile
Environmental Justice Indexes			
EJ Index for Particulate Matter 2.5	38	31	45
EJ Index for Ozone	34	27	41
EJ Index for 2017 Diesel Particulate Matter*	45	36	52
EJ Index for 2017 Air Toxics Cancer Risk*	40	33	47
EJ Index for 2017 Air Toxics Respiratory HI*	38	31	44
EJ Index for Traffic Proximity	52	39	54
EJ Index for Lead Paint	10	8	29
EJ Index for Superfund Proximity	35	29	46
EJ Index for RMP Facility Proximity	33	25	35
EJ Index for Hazardous Waste Proximity	44	35	52
EJ Index for Underground Storage Tanks	65	49	64
EJ Index for Wastewater Discharge	57	43	61

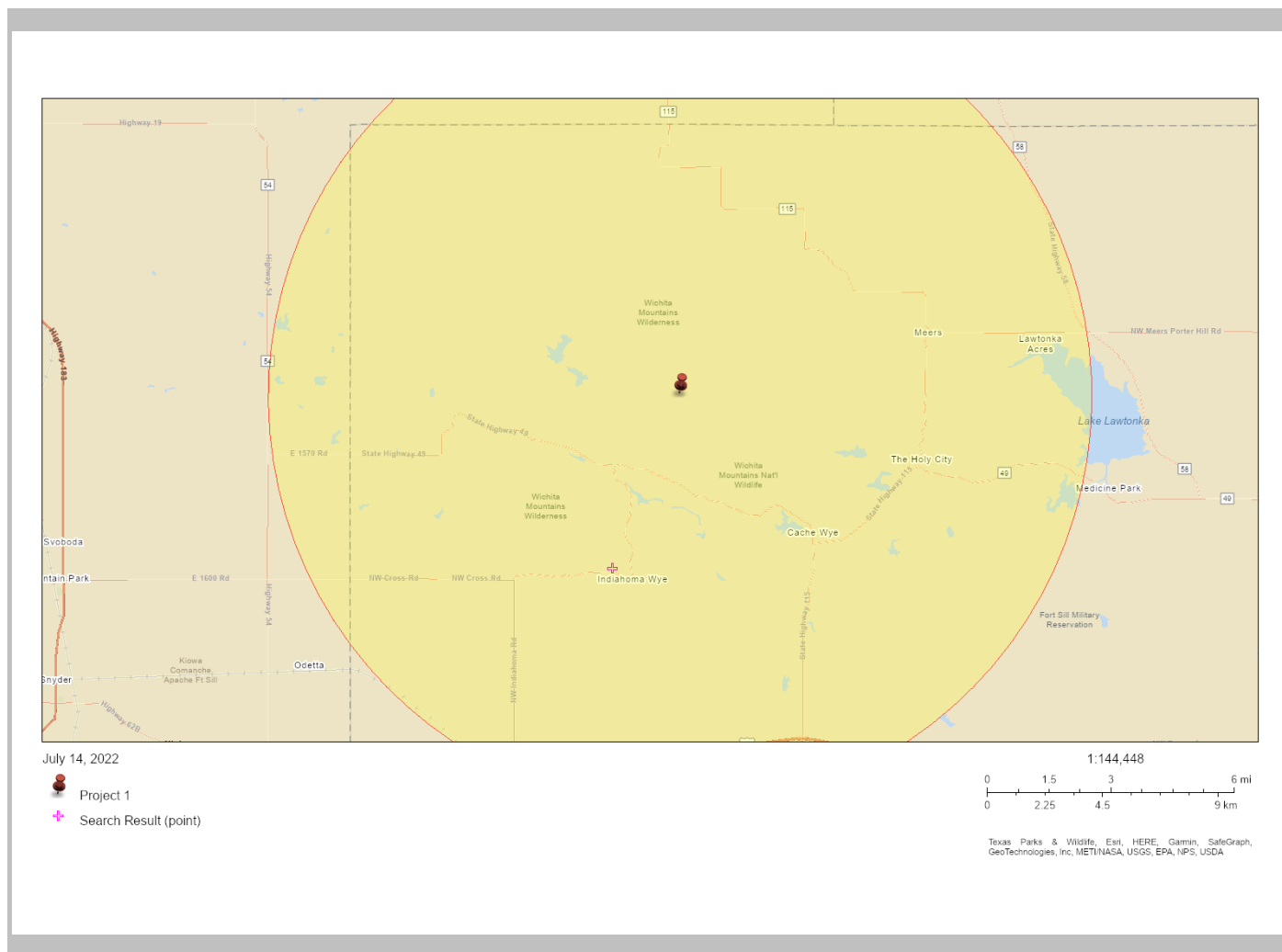


This report shows the values for environmental and demographic indicators and EJSCREEN indexes. It shows environmental and demographic raw data (e.g., the estimated concentration of ozone in the air), and also shows what percentile each raw data value represents. These percentiles provide perspective on how the selected block group or buffer area compares to the entire state, EPA region, or nation. For example, if a given location is at the 95th percentile nationwide, this means that only 5 percent of the US population has a higher block group value than the average person in the location being analyzed. The years for which the data are available, and the methods used, vary across these indicators. Important caveats and uncertainties apply to this screening-level information, so it is essential to understand the limitations on appropriate interpretations and applications of these indicators. Please see EJSCREEN documentation for discussion of these issues before using reports.

10 miles Ring Centered at 34.760019,-98.685383, OKLAHOMA, EPA Region 6

Approximate Population: 3,989

Input Area (sq. miles): 314.03



Sites reporting to EPA

Superfund NPL

0

Hazardous Waste Treatment, Storage, and Disposal Facilities (TSDF)

0

EJScreen Report (Version 2.0)

10 miles Ring Centered at 34.760019,-98.685383, OKLAHOMA, EPA Region 6

Approximate Population: 3,989

Input Area (sq. miles): 314.03

Selected Variables	Value	State Avg.	%ile in State	EPA Region Avg.	%ile in EPA Region	USA Avg.	%ile in USA
Pollution and Sources							
Particulate Matter 2.5 ($\mu\text{g}/\text{m}^3$)	7.82	9.66	3	9.32	10	8.74	28
Ozone (ppb)	48.2	45.9	79	41.1	87	42.6	86
2017 Diesel Particulate Matter* ($\mu\text{g}/\text{m}^3$)	0.0646	0.195	2	0.219	<50th	0.295	<50th
2017 Air Toxics Cancer Risk* (lifetime risk per million)	20	29	16	32	<50th	29	<50th
2017 Air Toxics Respiratory HI*	0.3	0.39	25	0.37	<50th	0.36	<50th
Traffic Proximity (daily traffic count/distance to road)	17	220	17	470	10	710	11
Lead Paint (% Pre-1960 Housing)	0.18	0.23	61	0.16	71	0.28	51
Superfund Proximity (site count/km distance)	0.022	0.05	30	0.08	30	0.13	19
RMP Facility Proximity (facility count/km distance)	0.16	0.57	26	0.83	24	0.75	28
Hazardous Waste Proximity (facility count/km distance)	0.088	0.84	28	0.8	20	2.2	14
Underground Storage Tanks (count/km ²)	0.24	1.5	35	2	27	3.9	28
Wastewater Discharge (toxicity-weighted concentration/m distance)	2.2E-08	0.09	0	0.5	0	12	0
Socioeconomic Indicators							
Demographic Index	29%	36%	41	44%	31	36%	48
People of Color	31%	34%	53	52%	30	40%	49
Low Income	27%	37%	33	36%	38	31%	48
Unemployment Rate	6%	5%	68	5%	66	5%	66
Linguistically Isolated	0%	2%	54	6%	37	5%	45
Less Than High School Education	6%	12%	26	15%	27	12%	35
Under Age 5	5%	7%	32	7%	35	6%	43
Over Age 64	18%	15%	67	13%	75	16%	66

*Diesel particulate matter, air toxics cancer risk, and air toxics respiratory hazard index are from the EPA's 2017 Air Toxics Data Update, which is the Agency's ongoing, comprehensive evaluation of air toxics in the United States. This effort aims to prioritize air toxics, emission sources, and locations of interest for further study. It is important to remember that the air toxics data presented here provide broad estimates of health risks over geographic areas of the country, not definitive risks to specific individuals or locations. Cancer risks and hazard indices from the Air Toxics Data Update are reported to one significant figure and any additional significant figures here are due to rounding. More information on the Air Toxics Data Update can be found at: <https://www.epa.gov/haps/air-toxics-data-update>.

For additional information, see: www.epa.gov/environmentaljustice

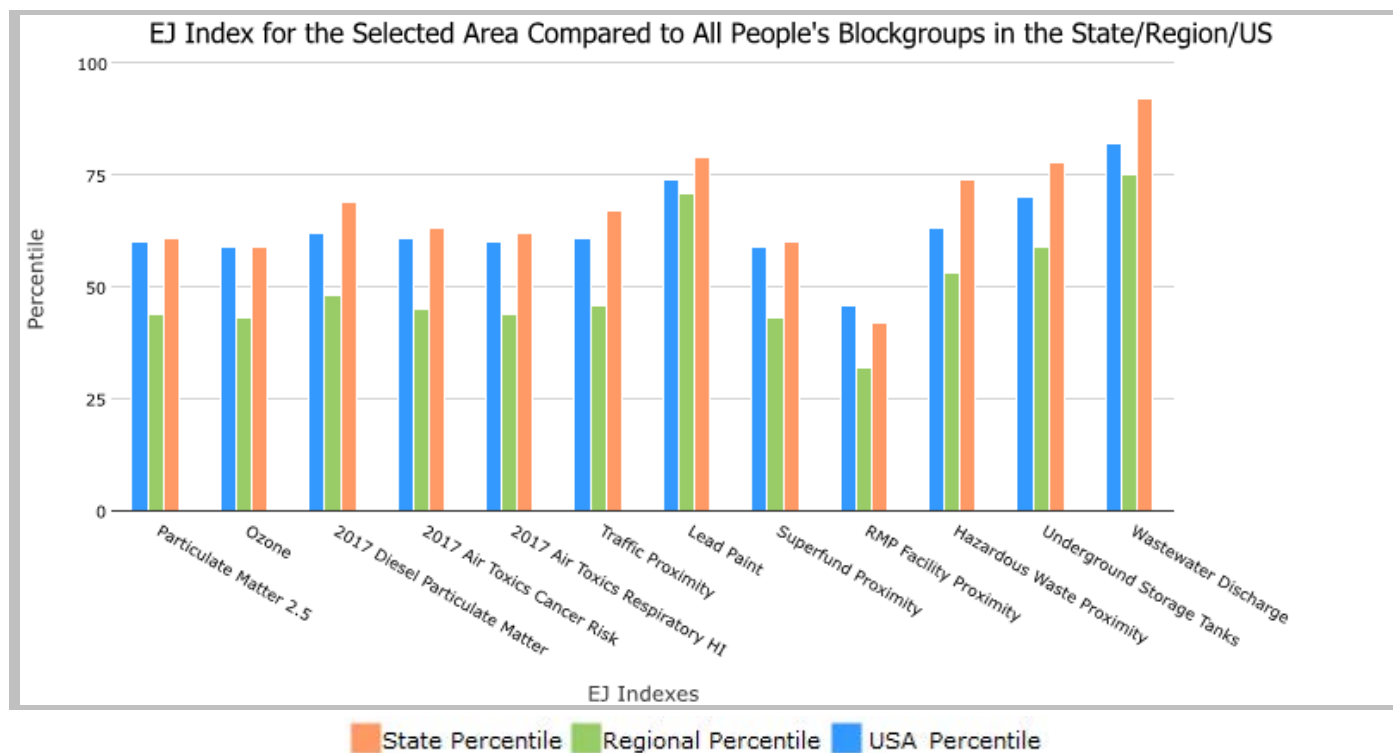
EJScreen is a screening tool for pre-decisional use only. It can help identify areas that may warrant additional consideration, analysis, or outreach. It does not provide a basis for decision-making, but it may help identify potential areas of EJ concern. Users should keep in mind that screening tools are subject to substantial uncertainty in their demographic and environmental data, particularly when looking at small geographic areas. Important caveats and uncertainties apply to this screening-level information, so it is essential to understand the limitations on appropriate interpretations and applications of these indicators. Please see EJScreen documentation for discussion of these issues before using reports. This screening tool does not provide data on every environmental impact and demographic factor that may be relevant to a particular location. EJScreen outputs should be supplemented with additional information and local knowledge before taking any action to address potential EJ concerns.

County: Muskogee, Garfield, Choctaw, OKLAHOMA, EPA Region 6

Approximate Population: 145,441

Input Area (sq. miles): 2699.60

Selected Variables	State Percentile	EPA Region Percentile	USA Percentile
Environmental Justice Indexes			
EJ Index for Particulate Matter 2.5	61	44	60
EJ Index for Ozone	59	43	59
EJ Index for 2017 Diesel Particulate Matter*	69	48	62
EJ Index for 2017 Air Toxics Cancer Risk*	63	45	61
EJ Index for 2017 Air Toxics Respiratory HI*	62	44	60
EJ Index for Traffic Proximity	67	46	61
EJ Index for Lead Paint	79	71	74
EJ Index for Superfund Proximity	60	43	59
EJ Index for RMP Facility Proximity	42	32	46
EJ Index for Hazardous Waste Proximity	74	53	63
EJ Index for Underground Storage Tanks	78	59	70
EJ Index for Wastewater Discharge	92	75	82

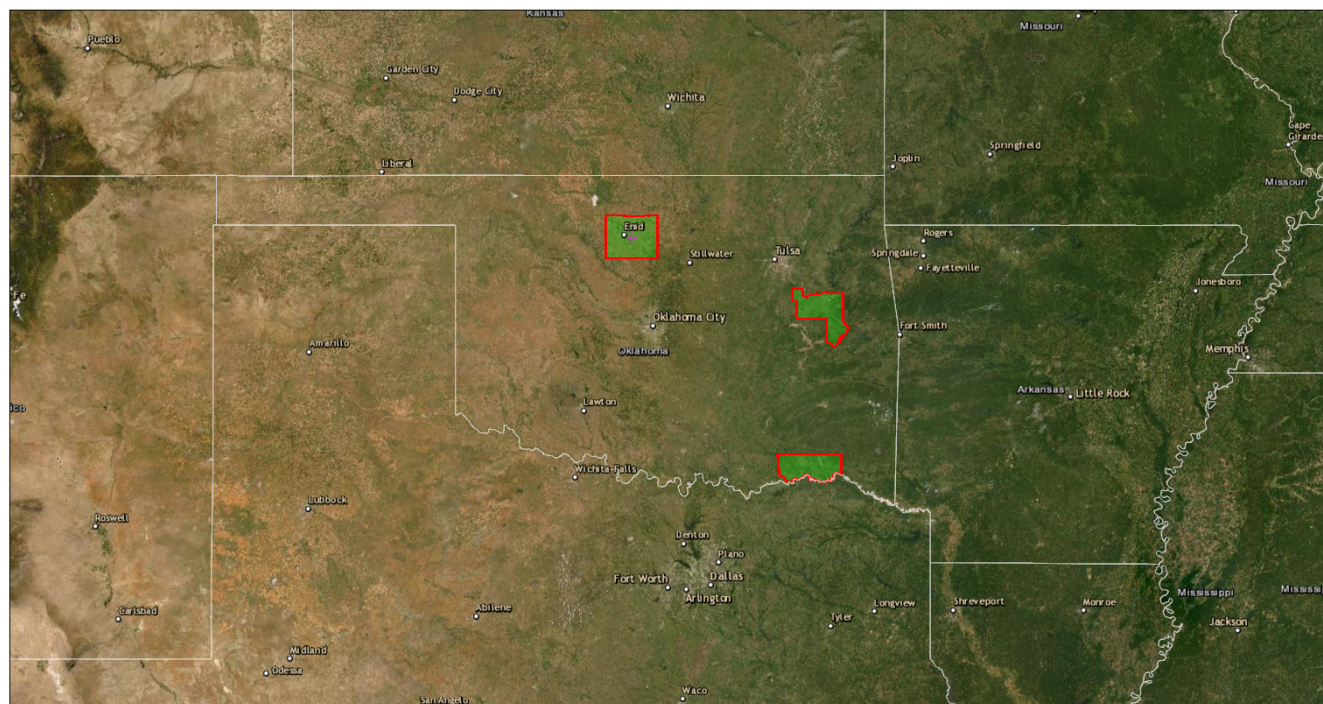


This report shows the values for environmental and demographic indicators and EJSCREEN indexes. It shows environmental and demographic raw data (e.g., the estimated concentration of ozone in the air), and also shows what percentile each raw data value represents. These percentiles provide perspective on how the selected block group or buffer area compares to the entire state, EPA region, or nation. For example, if a given location is at the 95th percentile nationwide, this means that only 5 percent of the US population has a higher block group value than the average person in the location being analyzed. The years for which the data are available, and the methods used, vary across these indicators. Important caveats and uncertainties apply to this screening-level information, so it is essential to understand the limitations on appropriate interpretations and applications of these indicators. Please see EJSCREEN documentation for discussion of these issues before using reports.

County: Muskogee, Garfield, Choctaw, OKLAHOMA, EPA Region 6

Approximate Population: 145,441

Input Area (sq. miles): 2699.60



July 15, 2022

Project 1

Search Result (point)

1:4,622,324

0 45 90 180 mi
0 75 150 300 km

Esri, HERE, Garmin, Earthstar Geographics

Sites reporting to EPA

Superfund NPL

0

Hazardous Waste Treatment, Storage, and Disposal Facilities (TSDF)

5

EJScreen Report (Version 2.0)

County: Muskogee, Garfield, Choctaw, OKLAHOMA, EPA Region 6

Approximate Population: 145,441

Input Area (sq. miles): 2699.60

Selected Variables	Value	State Avg.	%ile in State	EPA Region Avg.	%ile in EPA Region	USA Avg.	%ile in USA
Pollution and Sources							
Particulate Matter 2.5 ($\mu\text{g}/\text{m}^3$)	9.43	9.66	33	9.32	39	8.74	73
Ozone (ppb)	44.6	45.9	26	41.1	73	42.6	71
2017 Diesel Particulate Matter* ($\mu\text{g}/\text{m}^3$)	0.16	0.195	44	0.219	<50th	0.295	<50th
2017 Air Toxics Cancer Risk* (lifetime risk per million)	29	29	78	32	60-70th	29	70-80th
2017 Air Toxics Respiratory HI*	0.43	0.39	85	0.37	80-90th	0.36	80-90th
Traffic Proximity (daily traffic count/distance to road)	99	220	56	470	35	710	33
Lead Paint (% Pre-1960 Housing)	0.31	0.23	73	0.16	81	0.28	64
Superfund Proximity (site count/km distance)	0.011	0.05	13	0.08	6	0.13	5
RMP Facility Proximity (facility count/km distance)	0.57	0.57	69	0.83	59	0.75	63
Hazardous Waste Proximity (facility count/km distance)	0.42	0.84	50	0.8	56	2.2	41
Underground Storage Tanks (count/km ²)	2.1	1.5	73	2	66	3.9	59
Wastewater Discharge (toxicity-weighted concentration/m distance)	0.0073	0.09	77	0.5	71	12	66
Socioeconomic Indicators							
Demographic Index	38%	36%	63	44%	46	36%	61
People of Color	36%	34%	63	52%	35	40%	54
Low Income	41%	37%	59	36%	61	31%	70
Unemployment Rate	6%	5%	64	5%	63	5%	63
Linguistically Isolated	1%	2%	67	6%	44	5%	52
Less Than High School Education	14%	12%	67	15%	56	12%	67
Under Age 5	7%	7%	58	7%	53	6%	63
Over Age 64	17%	15%	61	13%	70	16%	61

*Diesel particulate matter, air toxics cancer risk, and air toxics respiratory hazard index are from the EPA's 2017 Air Toxics Data Update, which is the Agency's ongoing, comprehensive evaluation of air toxics in the United States. This effort aims to prioritize air toxics, emission sources, and locations of interest for further study. It is important to remember that the air toxics data presented here provide broad estimates of health risks over geographic areas of the country, not definitive risks to specific individuals or locations. Cancer risks and hazard indices from the Air Toxics Data Update are reported to one significant figure and any additional significant figures here are due to rounding. More information on the Air Toxics Data Update can be found at: <https://www.epa.gov/haps/air-toxics-data-update>.

For additional information, see: www.epa.gov/environmentaljustice

EJScreen is a screening tool for pre-decisional use only. It can help identify areas that may warrant additional consideration, analysis, or outreach. It does not provide a basis for decision-making, but it may help identify potential areas of EJ concern. Users should keep in mind that screening tools are subject to substantial uncertainty in their demographic and environmental data, particularly when looking at small geographic areas. Important caveats and uncertainties apply to this screening-level information, so it is essential to understand the limitations on appropriate interpretations and applications of these indicators. Please see EJScreen documentation for discussion of these issues before using reports. This screening tool does not provide data on every environmental impact and demographic factor that may be relevant to a particular location. EJScreen outputs should be supplemented with additional information and local knowledge before taking any action to address potential EJ concerns.

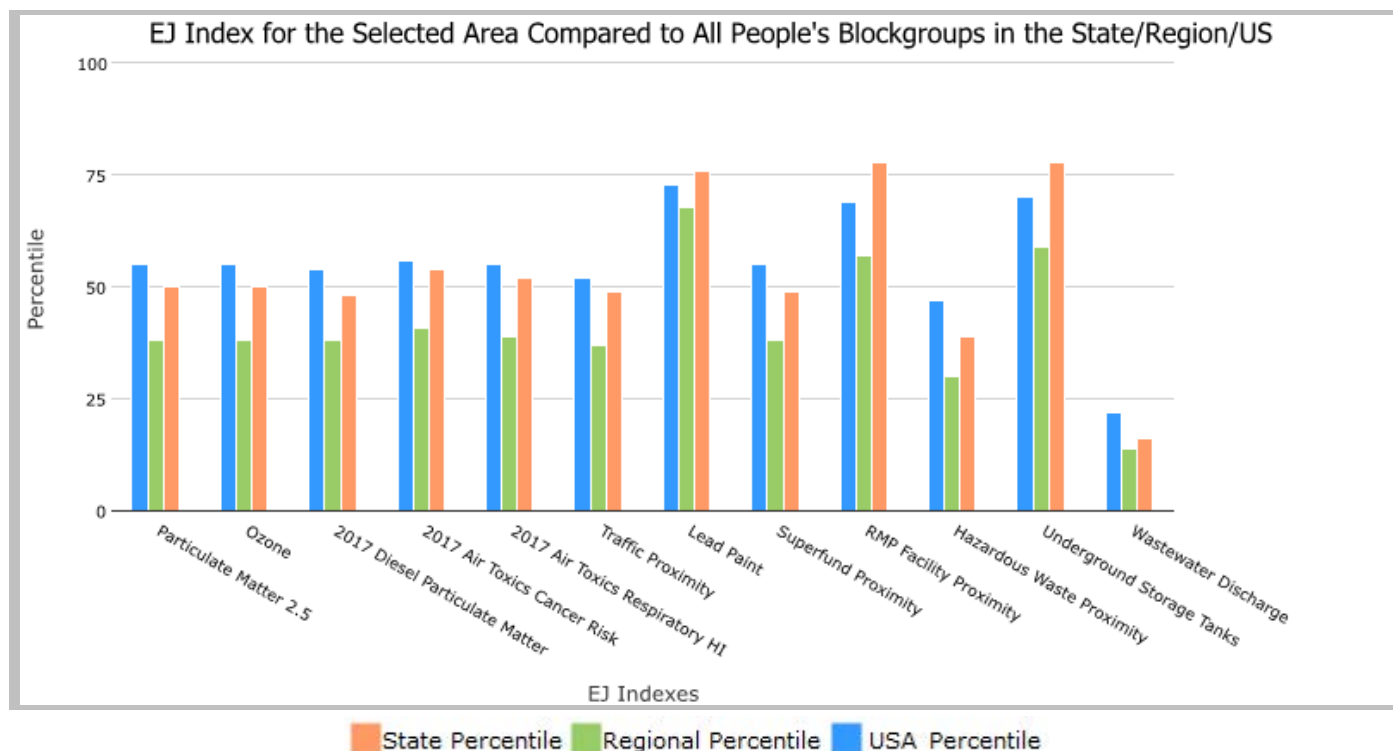
5 miles Ring Centered at 36.666160,-97.071628, OKLAHOMA, EPA Region 6

Approximate Population: 25,536

Input Area (sq. miles): 78.53

Continental-Carbon_Ponca-City

Selected Variables	State Percentile	EPA Region Percentile	USA Percentile
Environmental Justice Indexes			
EJ Index for Particulate Matter 2.5	50	38	55
EJ Index for Ozone	50	38	55
EJ Index for 2017 Diesel Particulate Matter*	48	38	54
EJ Index for 2017 Air Toxics Cancer Risk*	54	41	56
EJ Index for 2017 Air Toxics Respiratory HI*	52	39	55
EJ Index for Traffic Proximity	49	37	52
EJ Index for Lead Paint	76	68	73
EJ Index for Superfund Proximity	49	38	55
EJ Index for RMP Facility Proximity	78	57	69
EJ Index for Hazardous Waste Proximity	39	30	47
EJ Index for Underground Storage Tanks	78	59	70
EJ Index for Wastewater Discharge	16	14	22



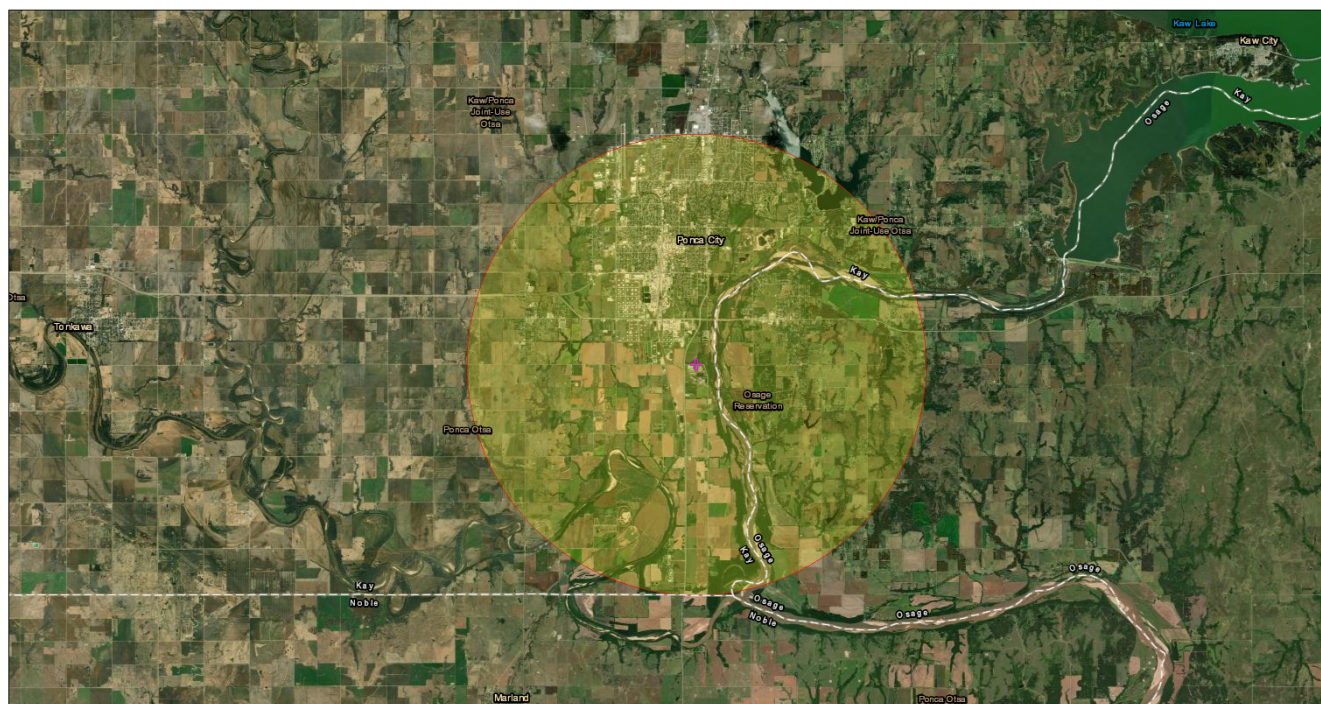
This report shows the values for environmental and demographic indicators and EJSCREEN indexes. It shows environmental and demographic raw data (e.g., the estimated concentration of ozone in the air), and also shows what percentile each raw data value represents. These percentiles provide perspective on how the selected block group or buffer area compares to the entire state, EPA region, or nation. For example, if a given location is at the 95th percentile nationwide, this means that only 5 percent of the US population has a higher block group value than the average person in the location being analyzed. The years for which the data are available, and the methods used, vary across these indicators. Important caveats and uncertainties apply to this screening-level information, so it is essential to understand the limitations on appropriate interpretations and applications of these indicators. Please see EJSCREEN documentation for discussion of these issues before using reports.

5 miles Ring Centered at 36.666160,-97.071628, OKLAHOMA, EPA Region 6

Approximate Population: 25,536

Input Area (sq. miles): 78.53

Continental-Carbon_Ponca-City



July 15, 2022

✚ Continental-Carbon_Ponca-City

1:144,448
0 1.5 3 6 mi
0 2.25 4.5 9 km
Esri, HERE, Garmin, Earthstar Geographics

Sites reporting to EPA

Superfund NPL	0
Hazardous Waste Treatment, Storage, and Disposal Facilities (TSDF)	3

EJScreen Report (Version 2.0)

5 miles Ring Centered at 36.666160,-97.071628, OKLAHOMA, EPA Region 6

Approximate Population: 25,536

Input Area (sq. miles): 78.53

Continental-Carbon_Ponca-City

Selected Variables	Value	State Avg.	%ile in State	EPA Region Avg.	%ile in EPA Region	USA Avg.	%ile in USA
Pollution and Sources							
Particulate Matter 2.5 ($\mu\text{g}/\text{m}^3$)	8.66	9.66	11	9.32	16	8.74	51
Ozone (ppb)	43.8	45.9	17	41.1	70	42.6	65
2017 Diesel Particulate Matter* ($\mu\text{g}/\text{m}^3$)	0.16	0.195	44	0.219	<50th	0.295	<50th
2017 Air Toxics Cancer Risk* (lifetime risk per million)	25	29	56	32	50-60th	29	60-70th
2017 Air Toxics Respiratory HI*	0.32	0.39	34	0.37	<50th	0.36	50-60th
Traffic Proximity (daily traffic count/distance to road)	98	220	56	470	34	710	33
Lead Paint (% Pre-1960 Housing)	0.49	0.23	83	0.16	89	0.28	77
Superfund Proximity (site count/km distance)	0.019	0.05	27	0.08	26	0.13	17
RMP Facility Proximity (facility count/km distance)	1.7	0.57	92	0.83	86	0.75	87
Hazardous Waste Proximity (facility count/km distance)	1.1	0.84	68	0.8	76	2.2	58
Underground Storage Tanks (count/km ²)	3.8	1.5	88	2	82	3.9	72
Wastewater Discharge (toxicity-weighted concentration/m distance)	0.011	0.09	80	0.5	75	12	69
Socioeconomic Indicators							
Demographic Index	35%	36%	56	44%	41	36%	57
People of Color	29%	34%	46	52%	27	40%	47
Low Income	42%	37%	60	36%	62	31%	71
Unemployment Rate	6%	5%	69	5%	68	5%	68
Linguistically Isolated	2%	2%	72	6%	47	5%	55
Less Than High School Education	13%	12%	65	15%	54	12%	65
Under Age 5	7%	7%	55	7%	51	6%	60
Over Age 64	18%	15%	68	13%	75	16%	66

*Diesel particulate matter, air toxics cancer risk, and air toxics respiratory hazard index are from the EPA's 2017 Air Toxics Data Update, which is the Agency's ongoing, comprehensive evaluation of air toxics in the United States. This effort aims to prioritize air toxics, emission sources, and locations of interest for further study. It is important to remember that the air toxics data presented here provide broad estimates of health risks over geographic areas of the country, not definitive risks to specific individuals or locations. Cancer risks and hazard indices from the Air Toxics Data Update are reported to one significant figure and any additional significant figures here are due to rounding. More information on the Air Toxics Data Update can be found at: <https://www.epa.gov/haps/air-toxics-data-update>.

For additional information, see: www.epa.gov/environmentaljustice

EJScreen is a screening tool for pre-decisional use only. It can help identify areas that may warrant additional consideration, analysis, or outreach. It does not provide a basis for decision-making, but it may help identify potential areas of EJ concern. Users should keep in mind that screening tools are subject to substantial uncertainty in their demographic and environmental data, particularly when looking at small geographic areas. Important caveats and uncertainties apply to this screening-level information, so it is essential to understand the limitations on appropriate interpretations and applications of these indicators. Please see EJScreen documentation for discussion of these issues before using reports. This screening tool does not provide data on every environmental impact and demographic factor that may be relevant to a particular location. EJScreen outputs should be supplemented with additional information and local knowledge before taking any action to address potential EJ concerns.

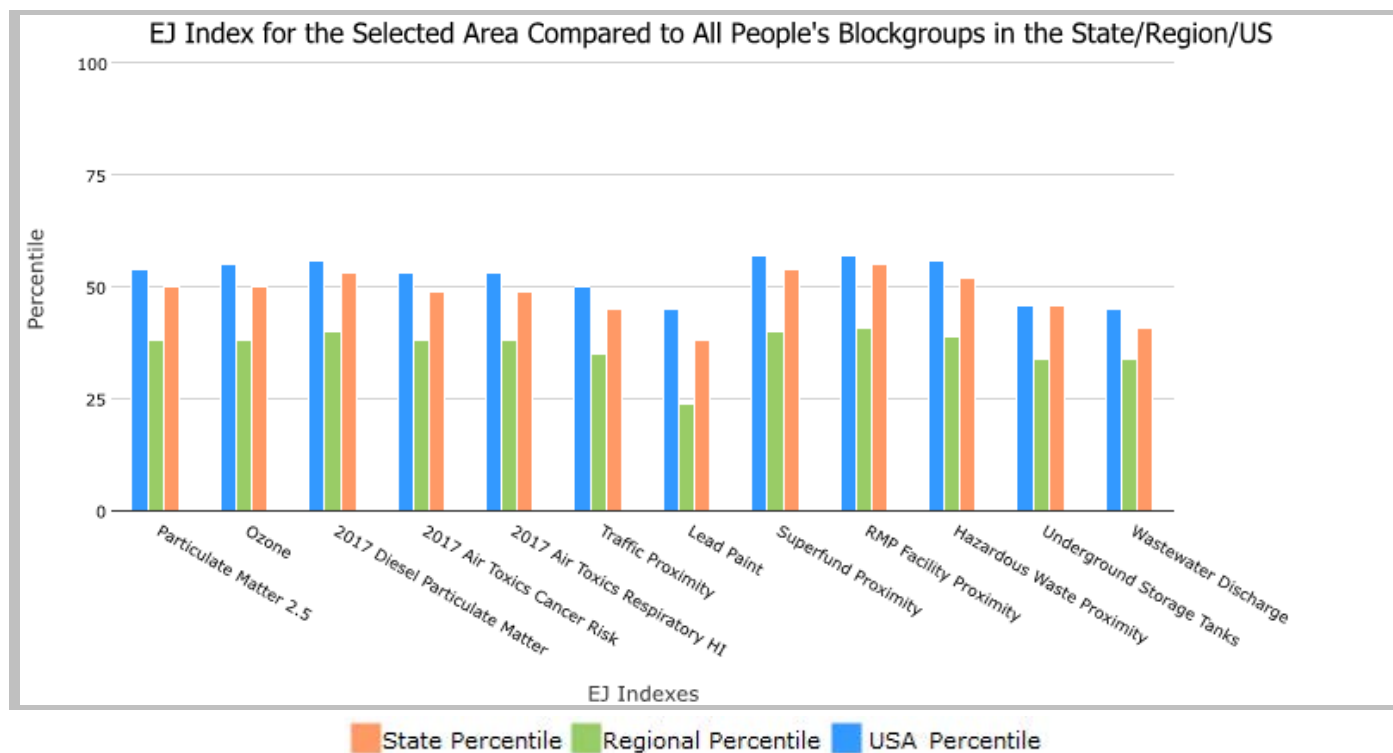
5 miles Ring Centered at 34.016279,-95.321996, OKLAHOMA, EPA Region 6

Approximate Population: 1,418

Input Area (sq. miles): 78.53

Grand River Dam Auth. EGU Mayes Co.

Selected Variables	State Percentile	EPA Region Percentile	USA Percentile
Environmental Justice Indexes			
EJ Index for Particulate Matter 2.5	50	38	54
EJ Index for Ozone	50	38	55
EJ Index for 2017 Diesel Particulate Matter*	53	40	56
EJ Index for 2017 Air Toxics Cancer Risk*	49	38	53
EJ Index for 2017 Air Toxics Respiratory HI*	49	38	53
EJ Index for Traffic Proximity	45	35	50
EJ Index for Lead Paint	38	24	45
EJ Index for Superfund Proximity	54	40	57
EJ Index for RMP Facility Proximity	55	41	57
EJ Index for Hazardous Waste Proximity	52	39	56
EJ Index for Underground Storage Tanks	46	34	46
EJ Index for Wastewater Discharge	41	34	45



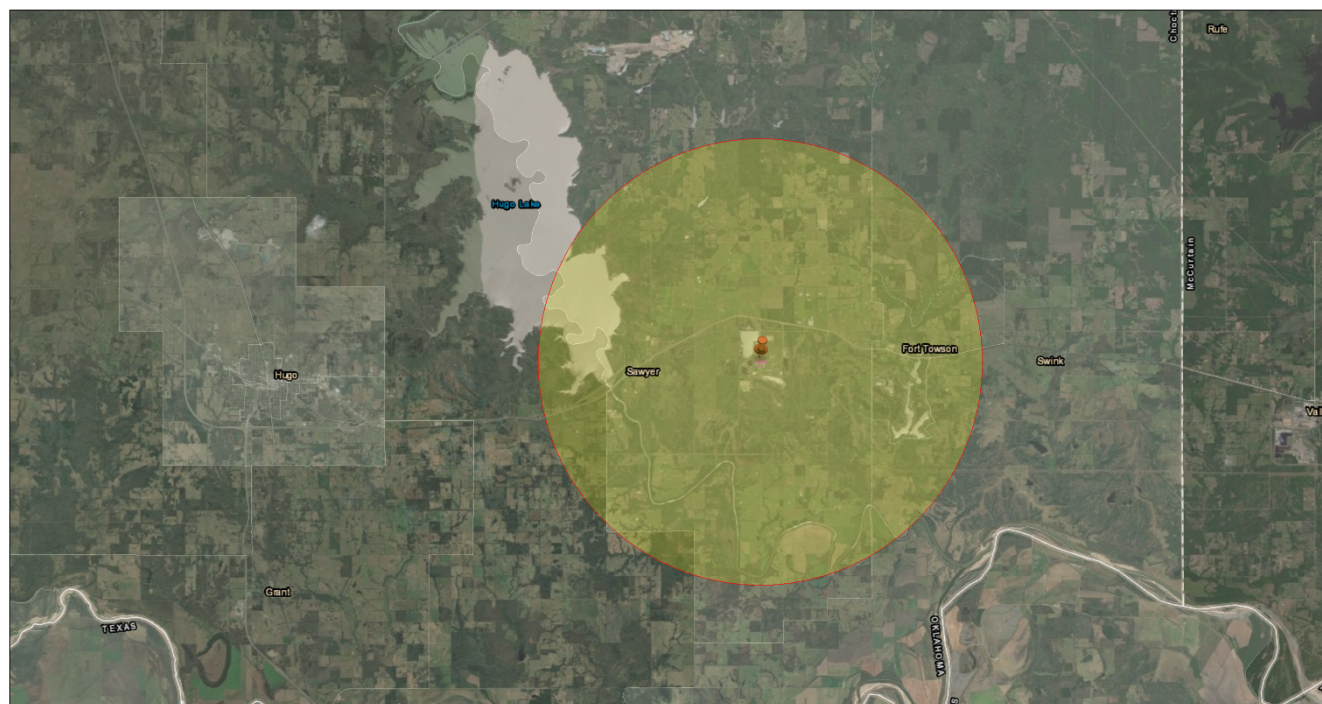
This report shows the values for environmental and demographic indicators and EJSCREEN indexes. It shows environmental and demographic raw data (e.g., the estimated concentration of ozone in the air), and also shows what percentile each raw data value represents. These percentiles provide perspective on how the selected block group or buffer area compares to the entire state, EPA region, or nation. For example, if a given location is at the 95th percentile nationwide, this means that only 5 percent of the US population has a higher block group value than the average person in the location being analyzed. The years for which the data are available, and the methods used, vary across these indicators. Important caveats and uncertainties apply to this screening-level information, so it is essential to understand the limitations on appropriate interpretations and applications of these indicators. Please see EJSCREEN documentation for discussion of these issues before using reports.

5 miles Ring Centered at 34.016279,-95.321996, OKLAHOMA, EPA Region 6

Approximate Population: 1,418

Input Area (sq. miles): 78.53

Grand River Dam Auth. EGU Mayes Co.

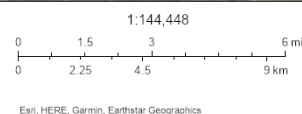
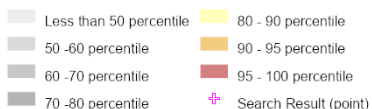


July 15, 2022

Grand River Dam Auth. EGU Mayes Co.

EJSCREEN_Indexes

Data not available



Sites reporting to EPA

Superfund NPL	0
Hazardous Waste Treatment, Storage, and Disposal Facilities (TSDF)	0

EJScreen Report (Version 2.0)

5 miles Ring Centered at 34.016279,-95.321996, OKLAHOMA, EPA Region 6

Approximate Population: 1,418

Input Area (sq. miles): 78.53

Grand River Dam Auth. EGU Mayes Co.

Selected Variables	Value	State Avg.	%ile in State	EPA Region Avg.	%ile in EPA Region	USA Avg.	%ile in USA
Pollution and Sources							
Particulate Matter 2.5 ($\mu\text{g}/\text{m}^3$)	9.27	9.66	23	9.32	31	8.74	69
Ozone (ppb)	41.3	45.9	3	41.1	56	42.6	40
2017 Diesel Particulate Matter* ($\mu\text{g}/\text{m}^3$)	0.0774	0.195	6	0.219	<50th	0.295	<50th
2017 Air Toxics Cancer Risk* (lifetime risk per million)	30	29	88	32	70-80th	29	80-90th
2017 Air Toxics Respiratory HI*	0.4	0.39	79	0.37	80-90th	0.36	80-90th
Traffic Proximity (daily traffic count/distance to road)	40	220	30	470	19	710	20
Lead Paint (% Pre-1960 Housing)	0.13	0.23	51	0.16	64	0.28	44
Superfund Proximity (site count/km distance)	0.0088	0.05	6	0.08	4	0.13	3
RMP Facility Proximity (facility count/km distance)	0.024	0.57	0	0.83	1	0.75	0
Hazardous Waste Proximity (facility count/km distance)	0.057	0.84	20	0.8	13	2.2	8
Underground Storage Tanks (count/km ²)	0.043	1.5	20	2	16	3.9	19
Wastewater Discharge (toxicity-weighted concentration/m distance)	0.00025	0.09	46	0.5	33	12	38
Socioeconomic Indicators							
Demographic Index	31%	36%	45	44%	34	36%	51
People of Color	22%	34%	26	52%	19	40%	38
Low Income	40%	37%	58	36%	59	31%	69
Unemployment Rate	9%	5%	85	5%	83	5%	82
Linguistically Isolated	0%	2%	54	6%	37	5%	45
Less Than High School Education	16%	12%	74	15%	61	12%	72
Under Age 5	4%	7%	23	7%	27	6%	34
Over Age 64	25%	15%	92	13%	92	16%	87

*Diesel particulate matter, air toxics cancer risk, and air toxics respiratory hazard index are from the EPA's 2017 Air Toxics Data Update, which is the Agency's ongoing, comprehensive evaluation of air toxics in the United States. This effort aims to prioritize air toxics, emission sources, and locations of interest for further study. It is important to remember that the air toxics data presented here provide broad estimates of health risks over geographic areas of the country, not definitive risks to specific individuals or locations. Cancer risks and hazard indices from the Air Toxics Data Update are reported to one significant figure and any additional significant figures here are due to rounding. More information on the Air Toxics Data Update can be found at: <https://www.epa.gov/haps/air-toxics-data-update>.

For additional information, see: www.epa.gov/environmentaljustice

EJScreen is a screening tool for pre-decisional use only. It can help identify areas that may warrant additional consideration, analysis, or outreach. It does not provide a basis for decision-making, but it may help identify potential areas of EJ concern. Users should keep in mind that screening tools are subject to substantial uncertainty in their demographic and environmental data, particularly when looking at small geographic areas. Important caveats and uncertainties apply to this screening-level information, so it is essential to understand the limitations on appropriate interpretations and applications of these indicators. Please see EJScreen documentation for discussion of these issues before using reports. This screening tool does not provide data on every environmental impact and demographic factor that may be relevant to a particular location. EJScreen outputs should be supplemented with additional information and local knowledge before taking any action to address potential EJ concerns.

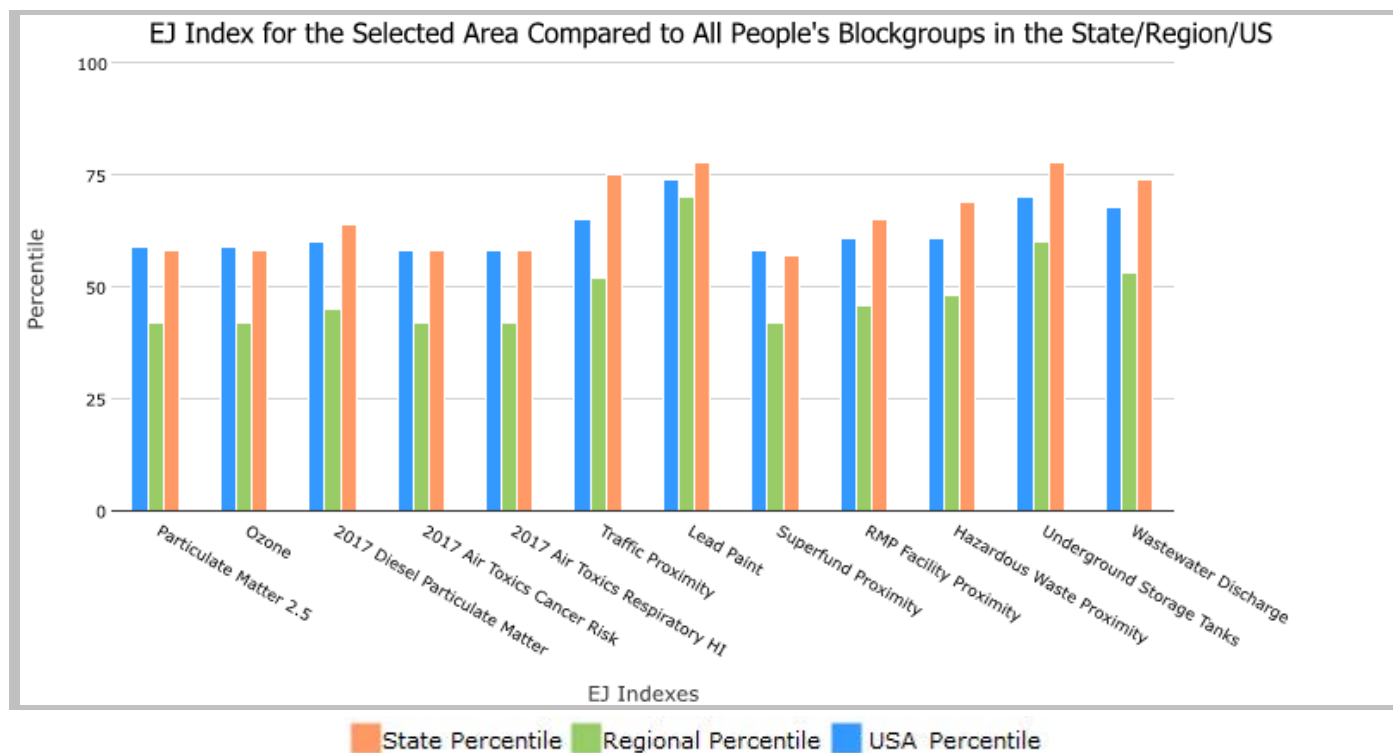
5 miles Ring Centered at 34.771599,-96.697214, OKLAHOMA, EPA Region 6

Approximate Population: 24,064

Input Area (sq. miles): 78.53

Holcim US INC ADA Plant

Selected Variables	State Percentile	EPA Region Percentile	USA Percentile
Environmental Justice Indexes			
EJ Index for Particulate Matter 2.5	58	42	59
EJ Index for Ozone	58	42	59
EJ Index for 2017 Diesel Particulate Matter*	64	45	60
EJ Index for 2017 Air Toxics Cancer Risk*	58	42	58
EJ Index for 2017 Air Toxics Respiratory HI*	58	42	58
EJ Index for Traffic Proximity	75	52	65
EJ Index for Lead Paint	78	70	74
EJ Index for Superfund Proximity	57	42	58
EJ Index for RMP Facility Proximity	65	46	61
EJ Index for Hazardous Waste Proximity	69	48	61
EJ Index for Underground Storage Tanks	78	60	70
EJ Index for Wastewater Discharge	74	53	68



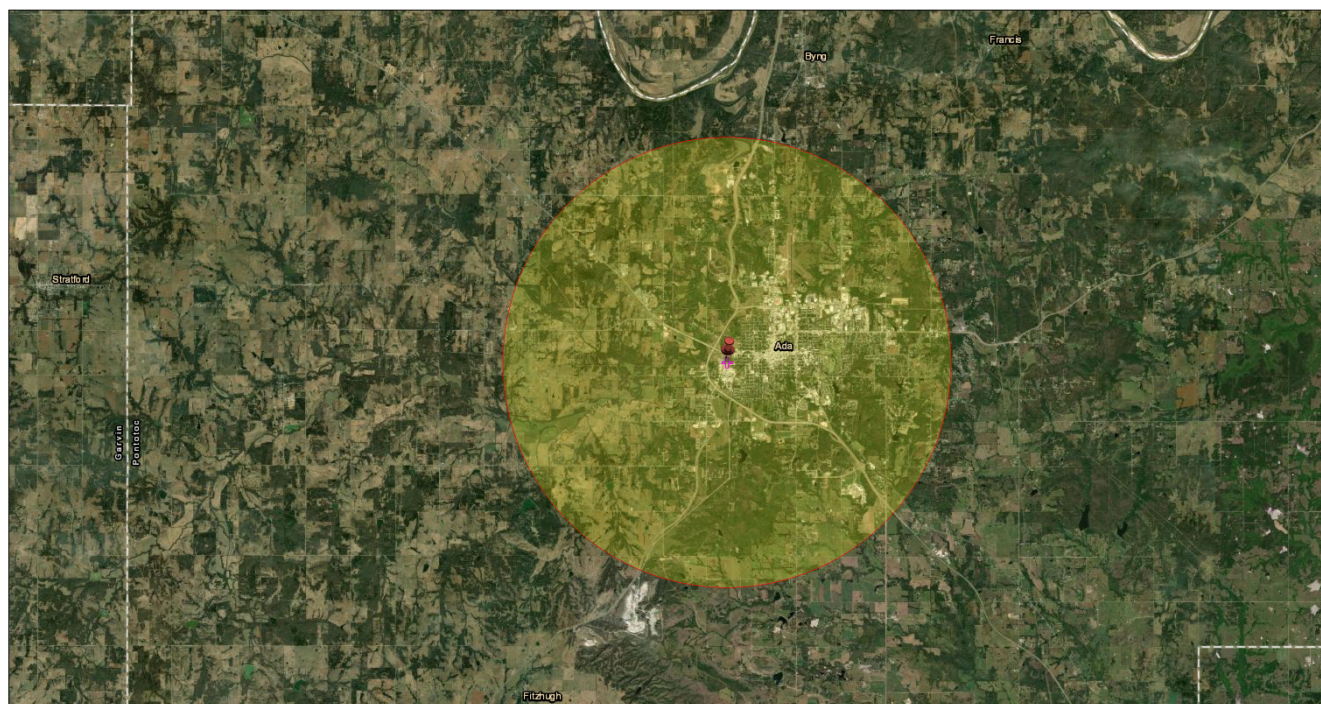
This report shows the values for environmental and demographic indicators and EJSCREEN indexes. It shows environmental and demographic raw data (e.g., the estimated concentration of ozone in the air), and also shows what percentile each raw data value represents. These percentiles provide perspective on how the selected block group or buffer area compares to the entire state, EPA region, or nation. For example, if a given location is at the 95th percentile nationwide, this means that only 5 percent of the US population has a higher block group value than the average person in the location being analyzed. The years for which the data are available, and the methods used, vary across these indicators. Important caveats and uncertainties apply to this screening-level information, so it is essential to understand the limitations on appropriate interpretations and applications of these indicators. Please see EJSCREEN documentation for discussion of these issues before using reports.

5 miles Ring Centered at 34.771599,-96.697214, OKLAHOMA, EPA Region 6

Approximate Population: 24,064

Input Area (sq. miles): 78.53

Holcim US INC ADA Plant



July 18, 2022

- Holcim US INC ADA Plant
- Search Result (point)

1:144,448
0 1.5 3 6 mi
0 2.25 4.5 9 km

Esri, HERE, Garmin, Earthstar Geographics

Sites reporting to EPA

Superfund NPL	0
Hazardous Waste Treatment, Storage, and Disposal Facilities (TSDF)	1

EJScreen Report (Version 2.0)

5 miles Ring Centered at 34.771599,-96.697214, OKLAHOMA, EPA Region 6

Approximate Population: 24,064

Input Area (sq. miles): 78.53

Holcim US INC ADA Plant

Selected Variables	Value	State Avg.	%ile in State	EPA Region Avg.	%ile in EPA Region	USA Avg.	%ile in USA
Pollution and Sources							
Particulate Matter 2.5 ($\mu\text{g}/\text{m}^3$)	9.42	9.66	32	9.32	38	8.74	72
Ozone (ppb)	44.5	45.9	26	41.1	73	42.6	71
2017 Diesel Particulate Matter* ($\mu\text{g}/\text{m}^3$)	0.166	0.195	46	0.219	<50th	0.295	<50th
2017 Air Toxics Cancer Risk* (lifetime risk per million)	30	29	85	32	70-80th	29	80-90th
2017 Air Toxics Respiratory HI*	0.38	0.39	68	0.37	70-80th	0.36	70-80th
Traffic Proximity (daily traffic count/distance to road)	130	220	64	470	41	710	38
Lead Paint (% Pre-1960 Housing)	0.29	0.23	72	0.16	80	0.28	62
Superfund Proximity (site count/km distance)	0.012	0.05	15	0.08	8	0.13	6
RMP Facility Proximity (facility count/km distance)	0.21	0.57	38	0.83	35	0.75	39
Hazardous Waste Proximity (facility count/km distance)	0.36	0.84	49	0.8	53	2.2	39
Underground Storage Tanks (count/km ²)	1.9	1.5	71	2	63	3.9	57
Wastewater Discharge (toxicity-weighted concentration/m distance)	6.7E-05	0.09	36	0.5	23	12	28
Socioeconomic Indicators							
Demographic Index	38%	36%	63	44%	46	36%	61
People of Color	37%	34%	65	52%	37	40%	55
Low Income	40%	37%	58	36%	59	31%	68
Unemployment Rate	4%	5%	49	5%	50	5%	50
Linguistically Isolated	1%	2%	57	6%	38	5%	46
Less Than High School Education	11%	12%	53	15%	46	12%	58
Under Age 5	6%	7%	50	7%	48	6%	57
Over Age 64	15%	15%	51	13%	64	16%	54

*Diesel particulate matter, air toxics cancer risk, and air toxics respiratory hazard index are from the EPA's 2017 Air Toxics Data Update, which is the Agency's ongoing, comprehensive evaluation of air toxics in the United States. This effort aims to prioritize air toxics, emission sources, and locations of interest for further study. It is important to remember that the air toxics data presented here provide broad estimates of health risks over geographic areas of the country, not definitive risks to specific individuals or locations. Cancer risks and hazard indices from the Air Toxics Data Update are reported to one significant figure and any additional significant figures here are due to rounding. More information on the Air Toxics Data Update can be found at: <https://www.epa.gov/haps/air-toxics-data-update>.

For additional information, see: www.epa.gov/environmentaljustice

EJScreen is a screening tool for pre-decisional use only. It can help identify areas that may warrant additional consideration, analysis, or outreach. It does not provide a basis for decision-making, but it may help identify potential areas of EJ concern. Users should keep in mind that screening tools are subject to substantial uncertainty in their demographic and environmental data, particularly when looking at small geographic areas. Important caveats and uncertainties apply to this screening-level information, so it is essential to understand the limitations on appropriate interpretations and applications of these indicators. Please see EJScreen documentation for discussion of these issues before using reports. This screening tool does not provide data on every environmental impact and demographic factor that may be relevant to a particular location. EJScreen outputs should be supplemented with additional information and local knowledge before taking any action to address potential EJ concerns.

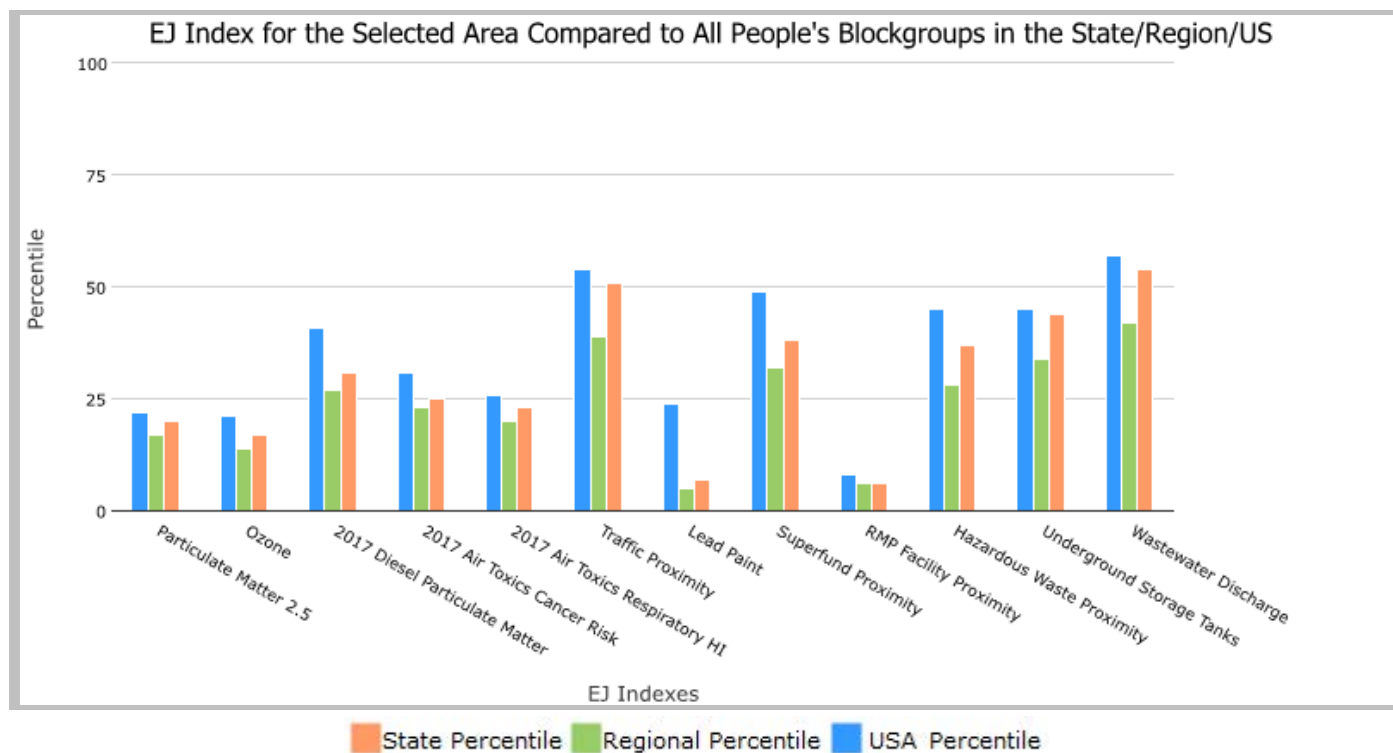
5 miles Ring Centered at 36.518714,-97.836905, OKLAHOMA, EPA Region 6

Approximate Population: 1,159

Input Area (sq. miles): 78.53

Oxbow Calcinating Kremlin Plant

Selected Variables	State Percentile	EPA Region Percentile	USA Percentile
Environmental Justice Indexes			
EJ Index for Particulate Matter 2.5	20	17	22
EJ Index for Ozone	17	14	21
EJ Index for 2017 Diesel Particulate Matter*	31	27	41
EJ Index for 2017 Air Toxics Cancer Risk*	25	23	31
EJ Index for 2017 Air Toxics Respiratory HI*	23	20	26
EJ Index for Traffic Proximity	51	39	54
EJ Index for Lead Paint	7	5	24
EJ Index for Superfund Proximity	38	32	49
EJ Index for RMP Facility Proximity	6	6	8
EJ Index for Hazardous Waste Proximity	37	28	45
EJ Index for Underground Storage Tanks	44	34	45
EJ Index for Wastewater Discharge	54	42	57



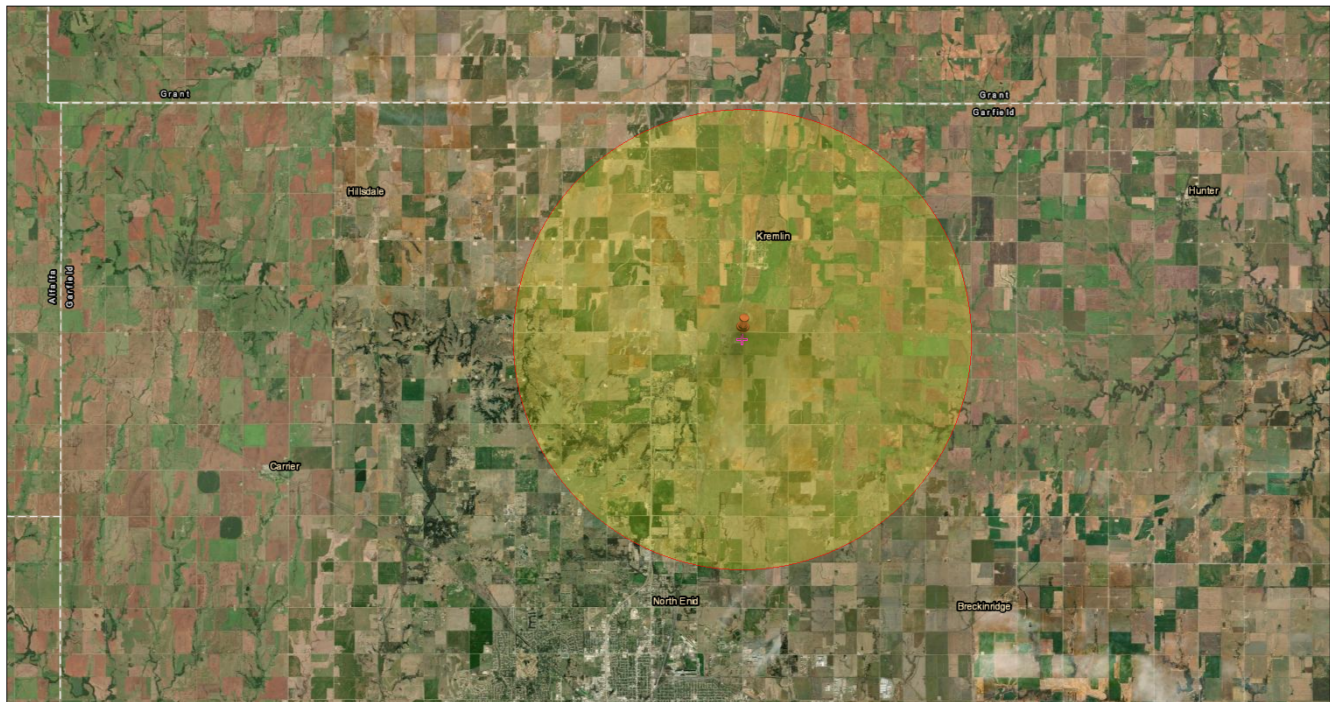
This report shows the values for environmental and demographic indicators and EJSCREEN indexes. It shows environmental and demographic raw data (e.g., the estimated concentration of ozone in the air), and also shows what percentile each raw data value represents. These percentiles provide perspective on how the selected block group or buffer area compares to the entire state, EPA region, or nation. For example, if a given location is at the 95th percentile nationwide, this means that only 5 percent of the US population has a higher block group value than the average person in the location being analyzed. The years for which the data are available, and the methods used, vary across these indicators. Important caveats and uncertainties apply to this screening-level information, so it is essential to understand the limitations on appropriate interpretations and applications of these indicators. Please see EJSCREEN documentation for discussion of these issues before using reports.

5 miles Ring Centered at 36.518714,-97.836905, OKLAHOMA, EPA Region 6

Approximate Population: 1,159

Input Area (sq. miles): 78.53

Oxbow Calcinating Kremlin Plant



Sites reporting to EPA

Superfund NPL

0

Hazardous Waste Treatment, Storage, and Disposal Facilities (TSDF)

0

EJScreen Report (Version 2.0)

5 miles Ring Centered at 36.518714,-97.836905, OKLAHOMA, EPA Region 6

Approximate Population: 1,159

Input Area (sq. miles): 78.53

Oxbow Calcinating Kremlin Plant

Selected Variables	Value	State Avg.	%ile in State	EPA Region Avg.	%ile in EPA Region	USA Avg.	%ile in USA
Pollution and Sources							
Particulate Matter 2.5 ($\mu\text{g}/\text{m}^3$)	8.86	9.66	12	9.32	19	8.74	57
Ozone (ppb)	46.6	45.9	54	41.1	81	42.6	83
2017 Diesel Particulate Matter* ($\mu\text{g}/\text{m}^3$)	0.0869	0.195	12	0.219	<50th	0.295	<50th
2017 Air Toxics Cancer Risk* (lifetime risk per million)	21	29	20	32	<50th	29	<50th
2017 Air Toxics Respiratory HI*	0.31	0.39	29	0.37	<50th	0.36	50-60th
Traffic Proximity (daily traffic count/distance to road)	1.7	220	4	470	2	710	2
Lead Paint (% Pre-1960 Housing)	0.18	0.23	61	0.16	71	0.28	51
Superfund Proximity (site count/km distance)	0.0093	0.05	9	0.08	4	0.13	3
RMP Facility Proximity (facility count/km distance)	1.1	0.57	84	0.83	75	0.75	78
Hazardous Waste Proximity (facility count/km distance)	0.077	0.84	26	0.8	17	2.2	12
Underground Storage Tanks (count/km ²)	0.015	1.5	14	2	12	3.9	17
Wastewater Discharge (toxicity-weighted concentration/m distance)	3E-07	0.09	0	0.5	0	12	0
Socioeconomic Indicators							
Demographic Index	10%	36%	1	44%	2	36%	7
People of Color	6%	34%	0	52%	3	40%	13
Low Income	13%	37%	10	36%	16	31%	21
Unemployment Rate	4%	5%	46	5%	46	5%	47
Linguistically Isolated	0%	2%	54	6%	37	5%	45
Less Than High School Education	5%	12%	22	15%	23	12%	30
Under Age 5	4%	7%	16	7%	20	6%	26
Over Age 64	18%	15%	68	13%	75	16%	66

*Diesel particulate matter, air toxics cancer risk, and air toxics respiratory hazard index are from the EPA's 2017 Air Toxics Data Update, which is the Agency's ongoing, comprehensive evaluation of air toxics in the United States. This effort aims to prioritize air toxics, emission sources, and locations of interest for further study. It is important to remember that the air toxics data presented here provide broad estimates of health risks over geographic areas of the country, not definitive risks to specific individuals or locations. Cancer risks and hazard indices from the Air Toxics Data Update are reported to one significant figure and any additional significant figures here are due to rounding. More information on the Air Toxics Data Update can be found at: <https://www.epa.gov/haps/air-toxics-data-update>.

For additional information, see: www.epa.gov/environmentaljustice

EJScreen is a screening tool for pre-decisional use only. It can help identify areas that may warrant additional consideration, analysis, or outreach. It does not provide a basis for decision-making, but it may help identify potential areas of EJ concern. Users should keep in mind that screening tools are subject to substantial uncertainty in their demographic and environmental data, particularly when looking at small geographic areas. Important caveats and uncertainties apply to this screening-level information, so it is essential to understand the limitations on appropriate interpretations and applications of these indicators. Please see EJScreen documentation for discussion of these issues before using reports. This screening tool does not provide data on every environmental impact and demographic factor that may be relevant to a particular location. EJScreen outputs should be supplemented with additional information and local knowledge before taking any action to address potential EJ concerns.

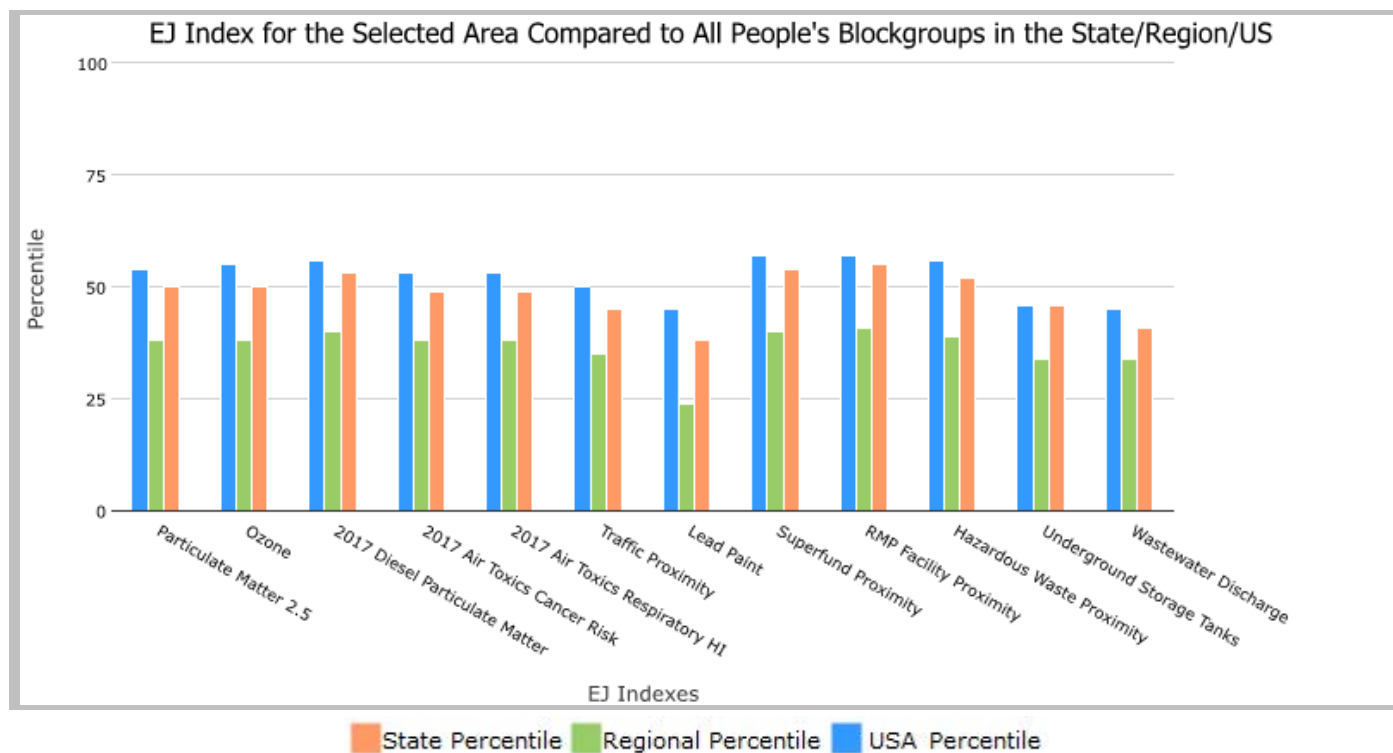
5 miles Ring Centered at 34.016329,-95.321882, OKLAHOMA, EPA Region 6

Approximate Population: 1,418

Input Area (sq. miles): 78.53

Western Farmers Electric Co-Op Hugo Power Plant

Selected Variables	State Percentile	EPA Region Percentile	USA Percentile
Environmental Justice Indexes			
EJ Index for Particulate Matter 2.5	50	38	54
EJ Index for Ozone	50	38	55
EJ Index for 2017 Diesel Particulate Matter*	53	40	56
EJ Index for 2017 Air Toxics Cancer Risk*	49	38	53
EJ Index for 2017 Air Toxics Respiratory HI*	49	38	53
EJ Index for Traffic Proximity	45	35	50
EJ Index for Lead Paint	38	24	45
EJ Index for Superfund Proximity	54	40	57
EJ Index for RMP Facility Proximity	55	41	57
EJ Index for Hazardous Waste Proximity	52	39	56
EJ Index for Underground Storage Tanks	46	34	46
EJ Index for Wastewater Discharge	41	34	45



This report shows the values for environmental and demographic indicators and EJSCREEN indexes. It shows environmental and demographic raw data (e.g., the estimated concentration of ozone in the air), and also shows what percentile each raw data value represents. These percentiles provide perspective on how the selected block group or buffer area compares to the entire state, EPA region, or nation. For example, if a given location is at the 95th percentile nationwide, this means that only 5 percent of the US population has a higher block group value than the average person in the location being analyzed. The years for which the data are available, and the methods used, vary across these indicators. Important caveats and uncertainties apply to this screening-level information, so it is essential to understand the limitations on appropriate interpretations and applications of these indicators. Please see EJSCREEN documentation for discussion of these issues before using reports.

5 miles Ring Centered at 34.016329,-95.321882, OKLAHOMA, EPA Region 6

Approximate Population: 1,418

Input Area (sq. miles): 78.53

Western Farmers Electric Co-Op Hugo Power Plant



July 18, 2022

- Western Farmers Electric Co-Op Hugo Power Plant
- Search Result (point)

0 1.5 3 6 mi
0 2.25 4.5 9 km

Esri, HERE, Garmin, Earthstar Geographics

Sites reporting to EPA

Superfund NPL

0

Hazardous Waste Treatment, Storage, and Disposal Facilities (TSDF)

0

EJScreen Report (Version 2.0)

5 miles Ring Centered at 34.016329,-95.321882, OKLAHOMA, EPA Region 6

Approximate Population: 1,418

Input Area (sq. miles): 78.53

Western Farmers Electric Co-Op Hugo Power Plant

Selected Variables	Value	State Avg.	%ile in State	EPA Region Avg.	%ile in EPA Region	USA Avg.	%ile in USA
Pollution and Sources							
Particulate Matter 2.5 ($\mu\text{g}/\text{m}^3$)	9.27	9.66	23	9.32	31	8.74	69
Ozone (ppb)	41.3	45.9	3	41.1	56	42.6	40
2017 Diesel Particulate Matter* ($\mu\text{g}/\text{m}^3$)	0.0774	0.195	6	0.219	<50th	0.295	<50th
2017 Air Toxics Cancer Risk* (lifetime risk per million)	30	29	88	32	70-80th	29	80-90th
2017 Air Toxics Respiratory HI*	0.4	0.39	79	0.37	80-90th	0.36	80-90th
Traffic Proximity (daily traffic count/distance to road)	40	220	30	470	19	710	20
Lead Paint (% Pre-1960 Housing)	0.13	0.23	51	0.16	64	0.28	44
Superfund Proximity (site count/km distance)	0.0088	0.05	6	0.08	4	0.13	3
RMP Facility Proximity (facility count/km distance)	0.024	0.57	0	0.83	1	0.75	0
Hazardous Waste Proximity (facility count/km distance)	0.057	0.84	20	0.8	13	2.2	8
Underground Storage Tanks (count/km ²)	0.043	1.5	20	2	16	3.9	19
Wastewater Discharge (toxicity-weighted concentration/m distance)	0.00025	0.09	46	0.5	33	12	38
Socioeconomic Indicators							
Demographic Index	31%	36%	45	44%	34	36%	51
People of Color	22%	34%	26	52%	19	40%	38
Low Income	40%	37%	58	36%	59	31%	69
Unemployment Rate	9%	5%	85	5%	83	5%	82
Linguistically Isolated	0%	2%	54	6%	37	5%	45
Less Than High School Education	16%	12%	74	15%	61	12%	72
Under Age 5	4%	7%	23	7%	27	6%	34
Over Age 64	25%	15%	92	13%	92	16%	87

*Diesel particulate matter, air toxics cancer risk, and air toxics respiratory hazard index are from the EPA's 2017 Air Toxics Data Update, which is the Agency's ongoing, comprehensive evaluation of air toxics in the United States. This effort aims to prioritize air toxics, emission sources, and locations of interest for further study. It is important to remember that the air toxics data presented here provide broad estimates of health risks over geographic areas of the country, not definitive risks to specific individuals or locations. Cancer risks and hazard indices from the Air Toxics Data Update are reported to one significant figure and any additional significant figures here are due to rounding. More information on the Air Toxics Data Update can be found at: <https://www.epa.gov/haps/air-toxics-data-update>.

For additional information, see: www.epa.gov/environmentaljustice

EJScreen is a screening tool for pre-decisional use only. It can help identify areas that may warrant additional consideration, analysis, or outreach. It does not provide a basis for decision-making, but it may help identify potential areas of EJ concern. Users should keep in mind that screening tools are subject to substantial uncertainty in their demographic and environmental data, particularly when looking at small geographic areas. Important caveats and uncertainties apply to this screening-level information, so it is essential to understand the limitations on appropriate interpretations and applications of these indicators. Please see EJScreen documentation for discussion of these issues before using reports. This screening tool does not provide data on every environmental impact and demographic factor that may be relevant to a particular location. EJScreen outputs should be supplemented with additional information and local knowledge before taking any action to address potential EJ concerns.

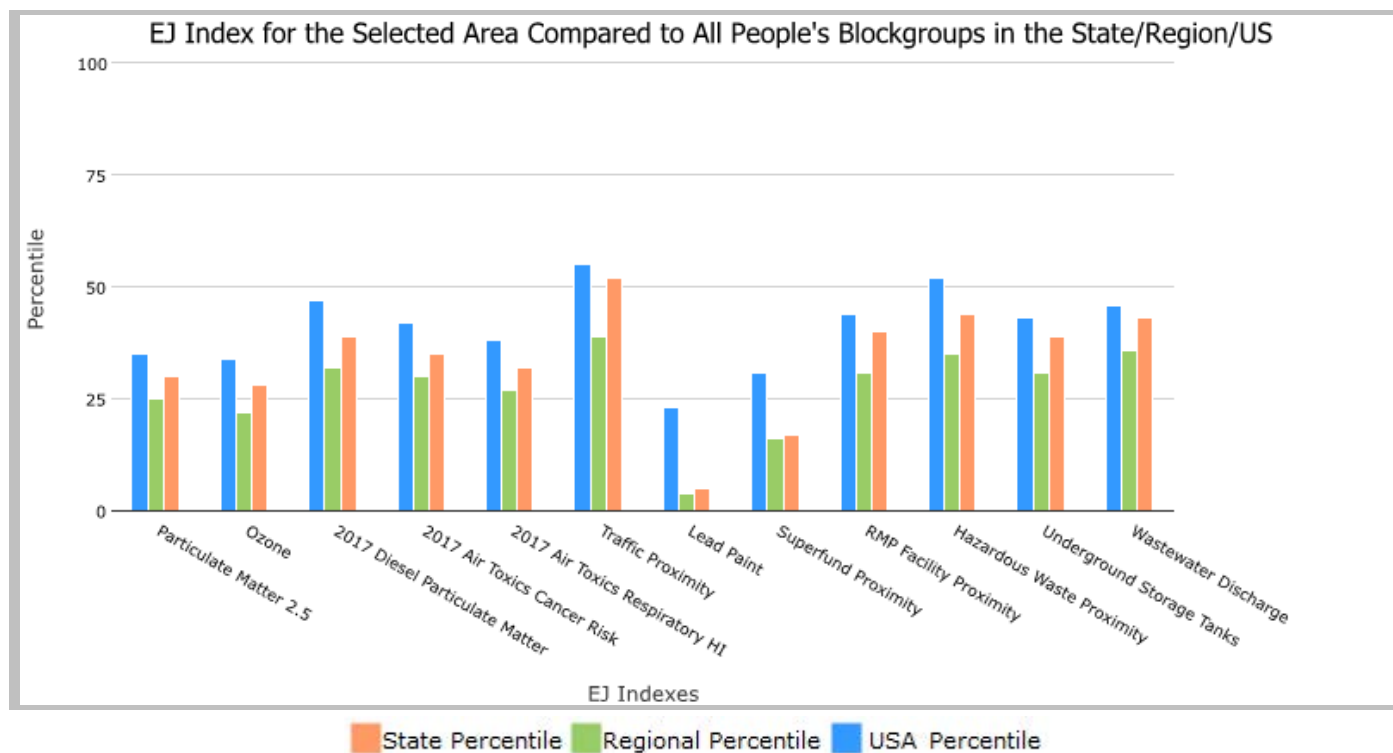
5 miles Ring Centered at 34.855221,-97.826565, OKLAHOMA, EPA Region 6

Approximate Population: 594

Input Area (sq. miles): 78.53

DCP Operating Co LP Chitwood Gas Plant

Selected Variables	State Percentile	EPA Region Percentile	USA Percentile
Environmental Justice Indexes			
EJ Index for Particulate Matter 2.5	30	25	35
EJ Index for Ozone	28	22	34
EJ Index for 2017 Diesel Particulate Matter*	39	32	47
EJ Index for 2017 Air Toxics Cancer Risk*	35	30	42
EJ Index for 2017 Air Toxics Respiratory HI*	32	27	38
EJ Index for Traffic Proximity	52	39	55
EJ Index for Lead Paint	5	4	23
EJ Index for Superfund Proximity	17	16	31
EJ Index for RMP Facility Proximity	40	31	44
EJ Index for Hazardous Waste Proximity	44	35	52
EJ Index for Underground Storage Tanks	39	31	43
EJ Index for Wastewater Discharge	43	36	46



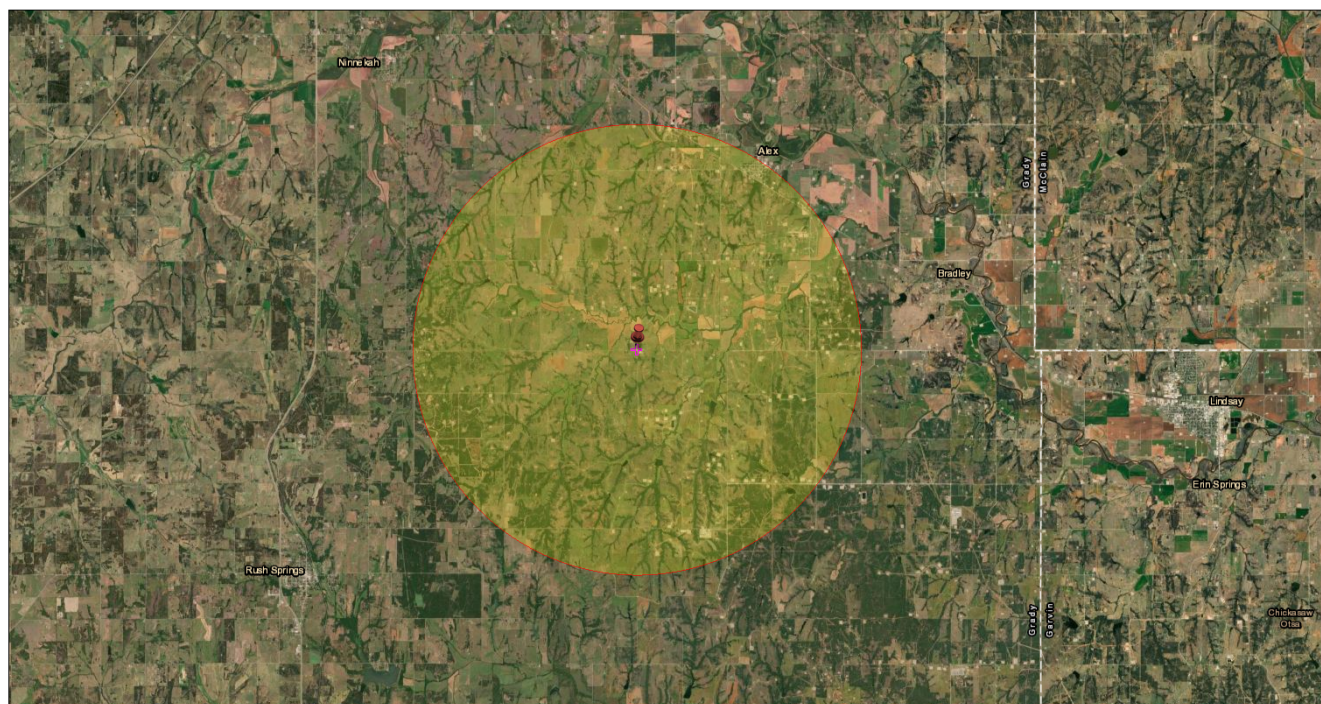
This report shows the values for environmental and demographic indicators and EJSCREEN indexes. It shows environmental and demographic raw data (e.g., the estimated concentration of ozone in the air), and also shows what percentile each raw data value represents. These percentiles provide perspective on how the selected block group or buffer area compares to the entire state, EPA region, or nation. For example, if a given location is at the 95th percentile nationwide, this means that only 5 percent of the US population has a higher block group value than the average person in the location being analyzed. The years for which the data are available, and the methods used, vary across these indicators. Important caveats and uncertainties apply to this screening-level information, so it is essential to understand the limitations on appropriate interpretations and applications of these indicators. Please see EJSCREEN documentation for discussion of these issues before using reports.

5 miles Ring Centered at 34.855221,-97.826565, OKLAHOMA, EPA Region 6

Approximate Population: 594

Input Area (sq. miles): 78.53

DCP Operating Co LP Chitwood Gas Plant



July 18, 2022

- DCP Operating Co LP Chitwood Gas Plant
- + Search Result (point)

1:144,448
0 1.5 3 6 mi
0 2.25 4.5 9 km
Esri, HERE, Garmin, Earthstar Geographics

Sites reporting to EPA

Superfund NPL

0

Hazardous Waste Treatment, Storage, and Disposal Facilities (TSDF)

0

EJScreen Report (Version 2.0)

5 miles Ring Centered at 34.855221,-97.826565, OKLAHOMA, EPA Region 6

Approximate Population: 594

Input Area (sq. miles): 78.53

DCP Operating Co LP Chitwood Gas Plant

Selected Variables	Value	State Avg.	%ile in State	EPA Region Avg.	%ile in EPA Region	USA Avg.	%ile in USA
Pollution and Sources							
Particulate Matter 2.5 ($\mu\text{g}/\text{m}^3$)	8.8	9.66	12	9.32	18	8.74	55
Ozone (ppb)	47.7	45.9	67	41.1	85	42.6	85
2017 Diesel Particulate Matter* ($\mu\text{g}/\text{m}^3$)	0.0838	0.195	10	0.219	<50th	0.295	<50th
2017 Air Toxics Cancer Risk* (lifetime risk per million)	20	29	16	32	<50th	29	<50th
2017 Air Toxics Respiratory HI*	0.3	0.39	25	0.37	<50th	0.36	<50th
Traffic Proximity (daily traffic count/distance to road)	2.6	220	6	470	3	710	3
Lead Paint (% Pre-1960 Housing)	0.25	0.23	68	0.16	77	0.28	58
Superfund Proximity (site count/km distance)	0.06	0.05	82	0.08	64	0.13	48
RMP Facility Proximity (facility count/km distance)	0.14	0.57	23	0.83	21	0.75	24
Hazardous Waste Proximity (facility count/km distance)	0.046	0.84	16	0.8	10	2.2	6
Underground Storage Tanks (count/km ²)	0.05	1.5	21	2	17	3.9	20
Wastewater Discharge (toxicity-weighted concentration/m distance)	1.4E-05	0.09	22	0.5	13	12	19
Socioeconomic Indicators							
Demographic Index	25%	36%	29	44%	23	36%	40
People of Color	11%	34%	4	52%	7	40%	22
Low Income	39%	37%	55	36%	57	31%	67
Unemployment Rate	5%	5%	57	5%	57	5%	57
Linguistically Isolated	0%	2%	54	6%	37	5%	45
Less Than High School Education	12%	12%	57	15%	49	12%	61
Under Age 5	7%	7%	56	7%	52	6%	62
Over Age 64	19%	15%	72	13%	78	16%	70

*Diesel particulate matter, air toxics cancer risk, and air toxics respiratory hazard index are from the EPA's 2017 Air Toxics Data Update, which is the Agency's ongoing, comprehensive evaluation of air toxics in the United States. This effort aims to prioritize air toxics, emission sources, and locations of interest for further study. It is important to remember that the air toxics data presented here provide broad estimates of health risks over geographic areas of the country, not definitive risks to specific individuals or locations. Cancer risks and hazard indices from the Air Toxics Data Update are reported to one significant figure and any additional significant figures here are due to rounding. More information on the Air Toxics Data Update can be found at: <https://www.epa.gov/haps/air-toxics-data-update>.

For additional information, see: www.epa.gov/environmentaljustice

EJScreen is a screening tool for pre-decisional use only. It can help identify areas that may warrant additional consideration, analysis, or outreach. It does not provide a basis for decision-making, but it may help identify potential areas of EJ concern. Users should keep in mind that screening tools are subject to substantial uncertainty in their demographic and environmental data, particularly when looking at small geographic areas. Important caveats and uncertainties apply to this screening-level information, so it is essential to understand the limitations on appropriate interpretations and applications of these indicators. Please see EJScreen documentation for discussion of these issues before using reports. This screening tool does not provide data on every environmental impact and demographic factor that may be relevant to a particular location. EJScreen outputs should be supplemented with additional information and local knowledge before taking any action to address potential EJ concerns.

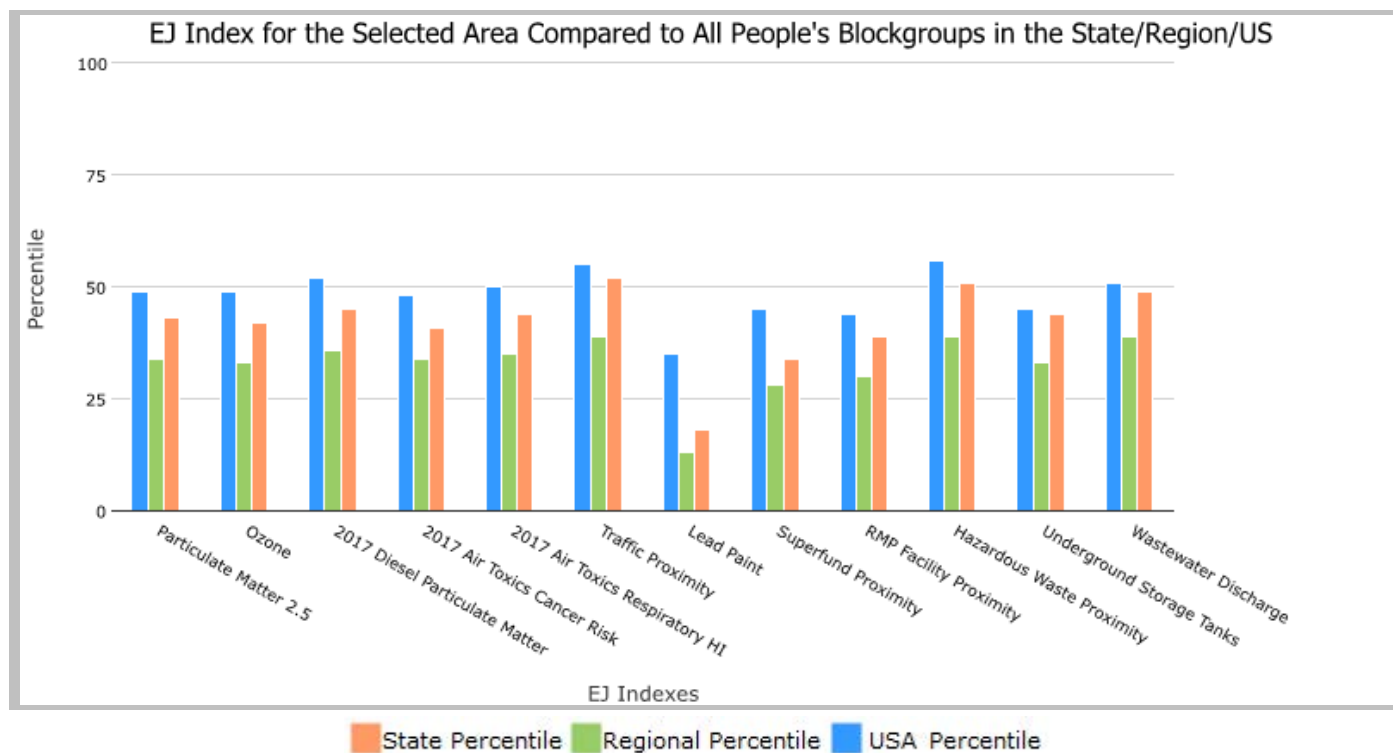
5 miles Ring Centered at 34.813596,-97.441419, OKLAHOMA, EPA Region 6

Approximate Population: 2,214

Input Area (sq. miles): 78.53

ONEOK Maysville Gas Plant

Selected Variables	State Percentile	EPA Region Percentile	USA Percentile
Environmental Justice Indexes			
EJ Index for Particulate Matter 2.5	43	34	49
EJ Index for Ozone	42	33	49
EJ Index for 2017 Diesel Particulate Matter*	45	36	52
EJ Index for 2017 Air Toxics Cancer Risk*	41	34	48
EJ Index for 2017 Air Toxics Respiratory HI*	44	35	50
EJ Index for Traffic Proximity	52	39	55
EJ Index for Lead Paint	18	13	35
EJ Index for Superfund Proximity	34	28	45
EJ Index for RMP Facility Proximity	39	30	44
EJ Index for Hazardous Waste Proximity	51	39	56
EJ Index for Underground Storage Tanks	44	33	45
EJ Index for Wastewater Discharge	49	39	51



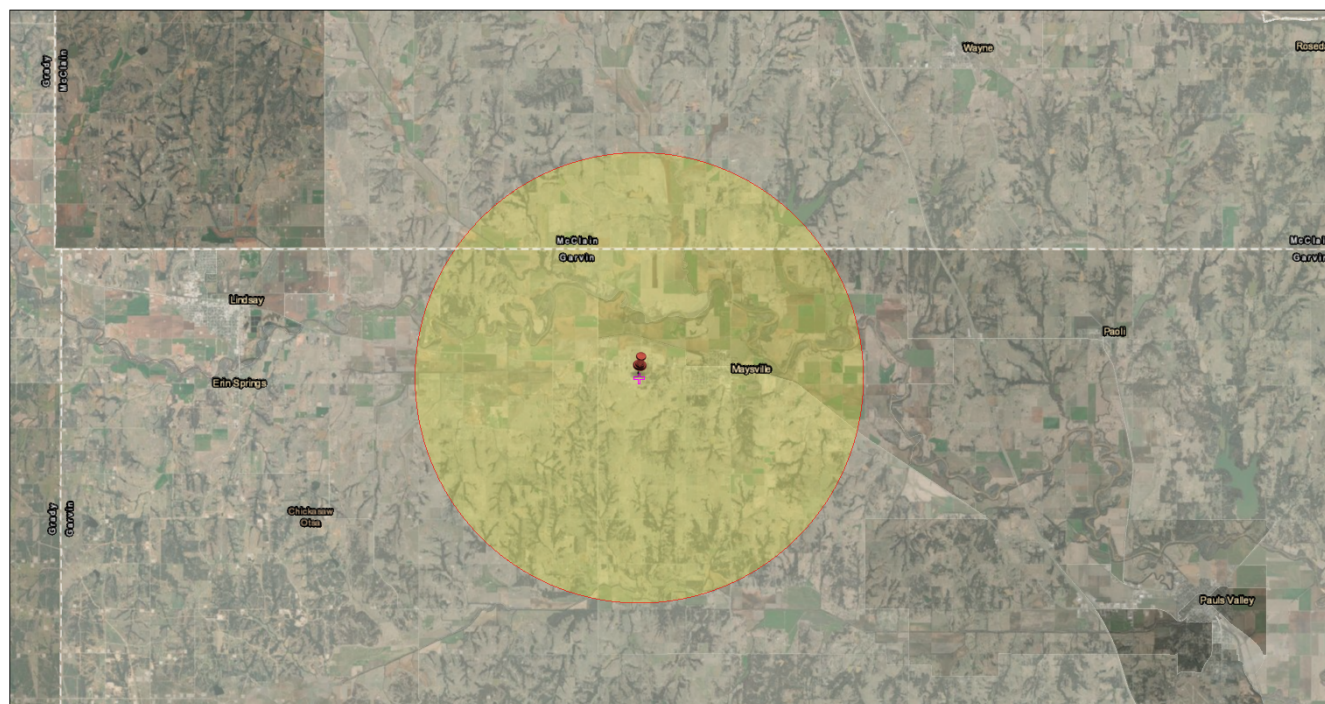
This report shows the values for environmental and demographic indicators and EJSCREEN indexes. It shows environmental and demographic raw data (e.g., the estimated concentration of ozone in the air), and also shows what percentile each raw data value represents. These percentiles provide perspective on how the selected block group or buffer area compares to the entire state, EPA region, or nation. For example, if a given location is at the 95th percentile nationwide, this means that only 5 percent of the US population has a higher block group value than the average person in the location being analyzed. The years for which the data are available, and the methods used, vary across these indicators. Important caveats and uncertainties apply to this screening-level information, so it is essential to understand the limitations on appropriate interpretations and applications of these indicators. Please see EJSCREEN documentation for discussion of these issues before using reports.

5 miles Ring Centered at 34.813596,-97.441419, OKLAHOMA, EPA Region 6

Approximate Population: 2,214

Input Area (sq. miles): 78.53

ONEOK Maysville Gas Plant



July 18, 2022

- ONEOK Maysville Gas Plant
- Search Result (point)
- EJSCREEN_StatePct
- Data not available
- Less than 50 percentile
- 50 - 60 percentile
- 60 - 70 percentile
- 70 - 80 percentile
- 80 - 90 percentile
- 90 - 95 percentile
- 95 - 100 percentile

1:144,448
0 1.5 3 6 mi
0 2.25 4.5 9 km
Esri, HERE, Garmin, Earthstar Geographics

Sites reporting to EPA	
Superfund NPL	0
Hazardous Waste Treatment, Storage, and Disposal Facilities (TSDF)	0

EJScreen Report (Version 2.0)

5 miles Ring Centered at 34.813596,-97.441419, OKLAHOMA, EPA Region 6

Approximate Population: 2,214

Input Area (sq. miles): 78.53

ONEOK Maysville Gas Plant

Selected Variables	Value	State Avg.	%ile in State	EPA Region Avg.	%ile in EPA Region	USA Avg.	%ile in USA
Pollution and Sources							
Particulate Matter 2.5 ($\mu\text{g}/\text{m}^3$)	9.26	9.66	21	9.32	30	8.74	68
Ozone (ppb)	46.6	45.9	53	41.1	81	42.6	83
2017 Diesel Particulate Matter* ($\mu\text{g}/\text{m}^3$)	0.107	0.195	24	0.219	<50th	0.295	<50th
2017 Air Toxics Cancer Risk* (lifetime risk per million)	30	29	88	32	70-80th	29	80-90th
2017 Air Toxics Respiratory HI*	0.31	0.39	29	0.37	<50th	0.36	50-60th
Traffic Proximity (daily traffic count/distance to road)	1	220	3	470	1	710	2
Lead Paint (% Pre-1960 Housing)	0.31	0.23	73	0.16	81	0.28	64
Superfund Proximity (site count/km distance)	0.044	0.05	72	0.08	53	0.13	38
RMP Facility Proximity (facility count/km distance)	0.32	0.57	53	0.83	45	0.75	50
Hazardous Waste Proximity (facility count/km distance)	0.033	0.84	10	0.8	7	2.2	4
Underground Storage Tanks (count/km ²)	0.074	1.5	24	2	19	3.9	21
Wastewater Discharge (toxicity-weighted concentration/m distance)	8.5E-06	0.09	19	0.5	11	12	17
Socioeconomic Indicators							
Demographic Index	28%	36%	38	44%	30	36%	47
People of Color	13%	34%	7	52%	9	40%	26
Low Income	43%	37%	64	36%	64	31%	73
Unemployment Rate	2%	5%	18	5%	20	5%	20
Linguistically Isolated	1%	2%	57	6%	38	5%	46
Less Than High School Education	10%	12%	50	15%	44	12%	55
Under Age 5	7%	7%	62	7%	57	6%	66
Over Age 64	18%	15%	68	13%	75	16%	66

*Diesel particulate matter, air toxics cancer risk, and air toxics respiratory hazard index are from the EPA's 2017 Air Toxics Data Update, which is the Agency's ongoing, comprehensive evaluation of air toxics in the United States. This effort aims to prioritize air toxics, emission sources, and locations of interest for further study. It is important to remember that the air toxics data presented here provide broad estimates of health risks over geographic areas of the country, not definitive risks to specific individuals or locations. Cancer risks and hazard indices from the Air Toxics Data Update are reported to one significant figure and any additional significant figures here are due to rounding. More information on the Air Toxics Data Update can be found at: <https://www.epa.gov/haps/air-toxics-data-update>.

For additional information, see: www.epa.gov/environmentaljustice

EJScreen is a screening tool for pre-decisional use only. It can help identify areas that may warrant additional consideration, analysis, or outreach. It does not provide a basis for decision-making, but it may help identify potential areas of EJ concern. Users should keep in mind that screening tools are subject to substantial uncertainty in their demographic and environmental data, particularly when looking at small geographic areas. Important caveats and uncertainties apply to this screening-level information, so it is essential to understand the limitations on appropriate interpretations and applications of these indicators. Please see EJScreen documentation for discussion of these issues before using reports. This screening tool does not provide data on every environmental impact and demographic factor that may be relevant to a particular location. EJScreen outputs should be supplemented with additional information and local knowledge before taking any action to address potential EJ concerns.

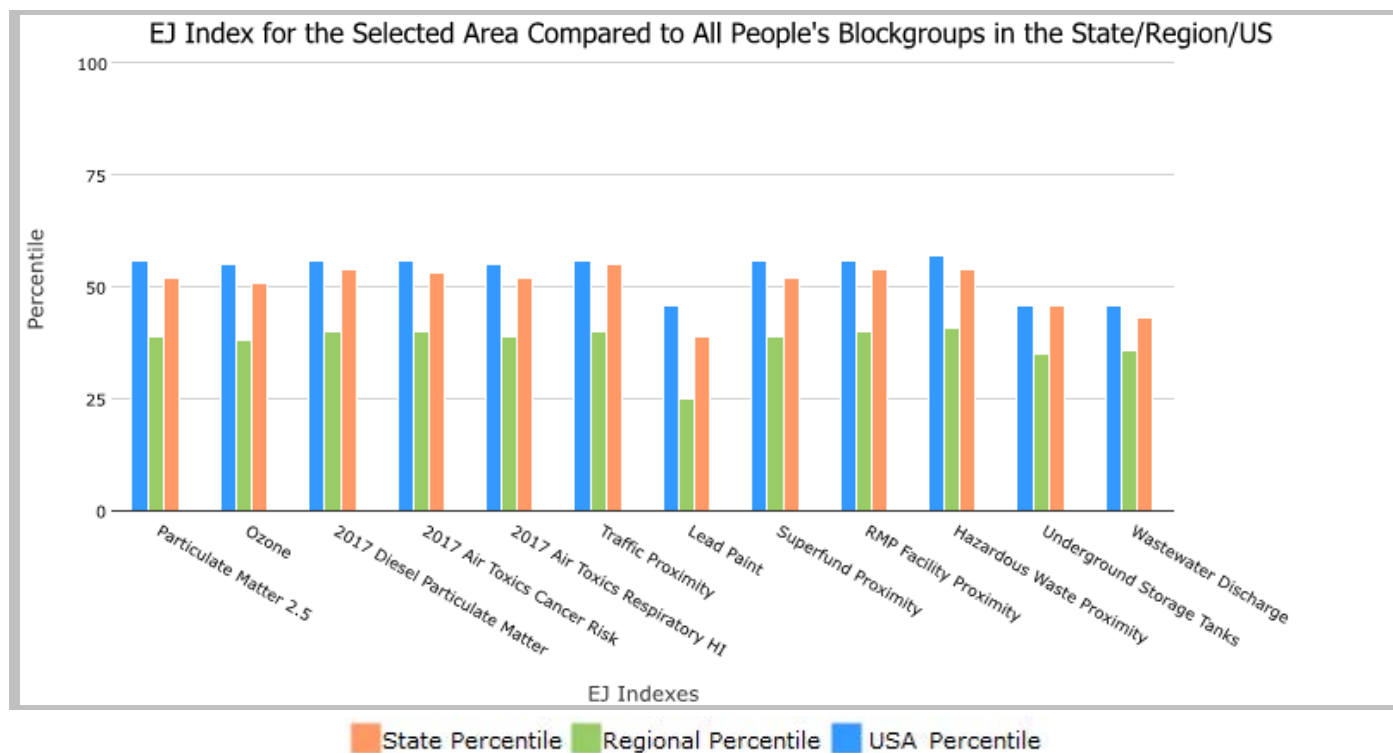
5 miles Ring Centered at 35.315274,-98.324427, OKLAHOMA, EPA Region 6

Approximate Population: 1,450

Input Area (sq. miles): 78.53

Mustang Gas Products LLC Binger Gas Plant

Selected Variables	State Percentile	EPA Region Percentile	USA Percentile
Environmental Justice Indexes			
EJ Index for Particulate Matter 2.5	52	39	56
EJ Index for Ozone	51	38	55
EJ Index for 2017 Diesel Particulate Matter*	54	40	56
EJ Index for 2017 Air Toxics Cancer Risk*	53	40	56
EJ Index for 2017 Air Toxics Respiratory HI*	52	39	55
EJ Index for Traffic Proximity	55	40	56
EJ Index for Lead Paint	39	25	46
EJ Index for Superfund Proximity	52	39	56
EJ Index for RMP Facility Proximity	54	40	56
EJ Index for Hazardous Waste Proximity	54	41	57
EJ Index for Underground Storage Tanks	46	35	46
EJ Index for Wastewater Discharge	43	36	46



This report shows the values for environmental and demographic indicators and EJSCREEN indexes. It shows environmental and demographic raw data (e.g., the estimated concentration of ozone in the air), and also shows what percentile each raw data value represents. These percentiles provide perspective on how the selected block group or buffer area compares to the entire state, EPA region, or nation. For example, if a given location is at the 95th percentile nationwide, this means that only 5 percent of the US population has a higher block group value than the average person in the location being analyzed. The years for which the data are available, and the methods used, vary across these indicators. Important caveats and uncertainties apply to this screening-level information, so it is essential to understand the limitations on appropriate interpretations and applications of these indicators. Please see EJSCREEN documentation for discussion of these issues before using reports.

Esri, HERE, Garmin, Earthstar Geographics

EJScreen Report (Version 2.0)

5 miles Ring Centered at 35.315274,-98.324427, OKLAHOMA, EPA Region 6

Approximate Population: 1,450

Input Area (sq. miles): 78.53

Mustang Gas Products LLC Binger Gas Plant

Selected Variables	Value	State Avg.	%ile in State	EPA Region Avg.	%ile in EPA Region	USA Avg.	%ile in USA
Pollution and Sources							
Particulate Matter 2.5 ($\mu\text{g}/\text{m}^3$)	8.56	9.66	10	9.32	15	8.74	48
Ozone (ppb)	48.3	45.9	84	41.1	88	42.6	86
2017 Diesel Particulate Matter* ($\mu\text{g}/\text{m}^3$)	0.0758	0.195	5	0.219	<50th	0.295	<50th
2017 Air Toxics Cancer Risk* (lifetime risk per million)	20	29	16	32	<50th	29	<50th
2017 Air Toxics Respiratory HI*	0.3	0.39	25	0.37	<50th	0.36	<50th
Traffic Proximity (daily traffic count/distance to road)	0.99	220	3	470	1	710	2
Lead Paint (% Pre-1960 Housing)	0.27	0.23	70	0.16	79	0.28	60
Superfund Proximity (site count/km distance)	0.02	0.05	28	0.08	27	0.13	17
RMP Facility Proximity (facility count/km distance)	0.07	0.57	10	0.83	8	0.75	8
Hazardous Waste Proximity (facility count/km distance)	0.032	0.84	9	0.8	6	2.2	3
Underground Storage Tanks (count/km ²)	0.068	1.5	23	2	19	3.9	21
Wastewater Discharge (toxicity-weighted concentration/m distance)	5.5E-05	0.09	34	0.5	21	12	27
Socioeconomic Indicators							
Demographic Index	32%	36%	48	44%	36	36%	53
People of Color	24%	34%	34	52%	22	40%	41
Low Income	40%	37%	57	36%	59	31%	68
Unemployment Rate	4%	5%	47	5%	47	5%	47
Linguistically Isolated	1%	2%	56	6%	38	5%	46
Less Than High School Education	14%	12%	67	15%	55	12%	66
Under Age 5	4%	7%	18	7%	22	6%	28
Over Age 64	21%	15%	81	13%	84	16%	77

*Diesel particulate matter, air toxics cancer risk, and air toxics respiratory hazard index are from the EPA's 2017 Air Toxics Data Update, which is the Agency's ongoing, comprehensive evaluation of air toxics in the United States. This effort aims to prioritize air toxics, emission sources, and locations of interest for further study. It is important to remember that the air toxics data presented here provide broad estimates of health risks over geographic areas of the country, not definitive risks to specific individuals or locations. Cancer risks and hazard indices from the Air Toxics Data Update are reported to one significant figure and any additional significant figures here are due to rounding. More information on the Air Toxics Data Update can be found at: <https://www.epa.gov/haps/air-toxics-data-update>.

For additional information, see: www.epa.gov/environmentaljustice

EJScreen is a screening tool for pre-decisional use only. It can help identify areas that may warrant additional consideration, analysis, or outreach. It does not provide a basis for decision-making, but it may help identify potential areas of EJ concern. Users should keep in mind that screening tools are subject to substantial uncertainty in their demographic and environmental data, particularly when looking at small geographic areas. Important caveats and uncertainties apply to this screening-level information, so it is essential to understand the limitations on appropriate interpretations and applications of these indicators. Please see EJScreen documentation for discussion of these issues before using reports. This screening tool does not provide data on every environmental impact and demographic factor that may be relevant to a particular location. EJScreen outputs should be supplemented with additional information and local knowledge before taking any action to address potential EJ concerns.

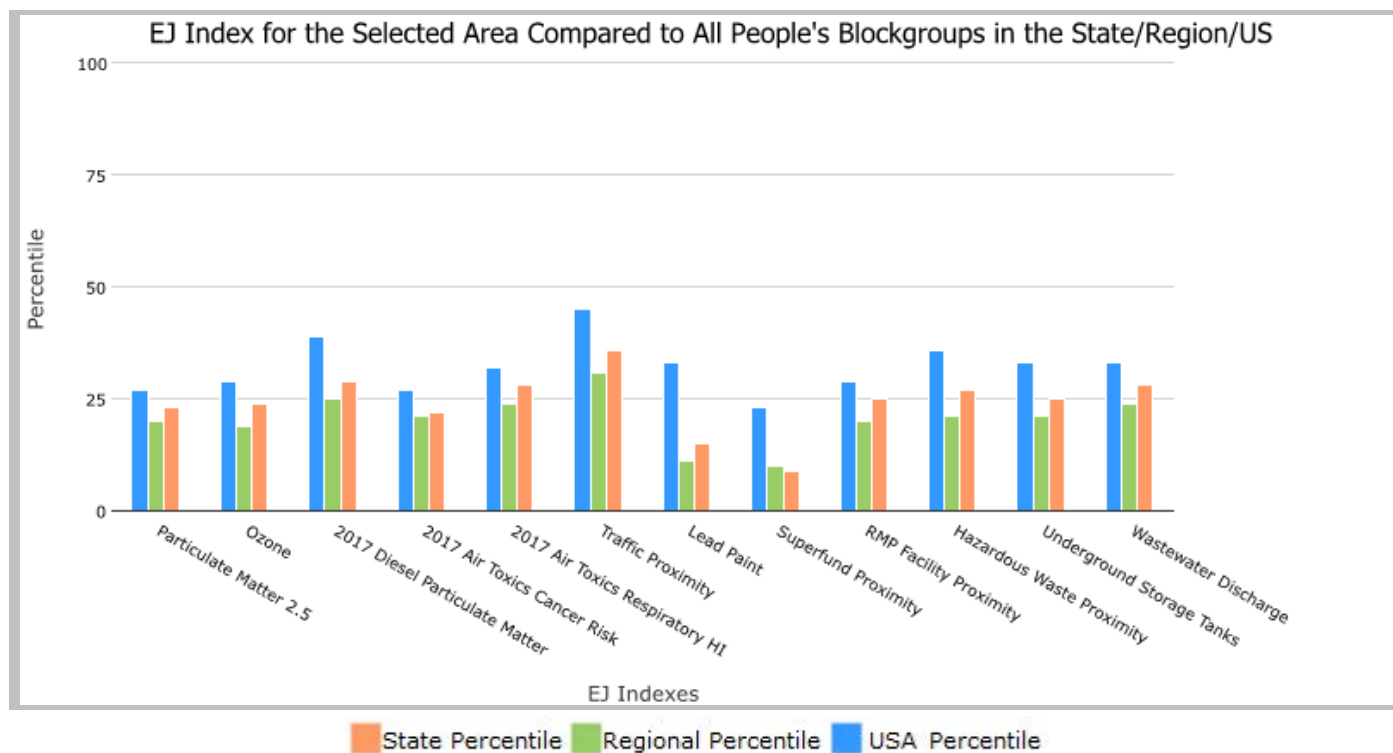
5 miles Ring Centered at 35.506956,-97.184749, OKLAHOMA, EPA Region 6

Approximate Population: 18,501

Input Area (sq. miles): 78.53

OG+E Horseshoe Lake Generating Station

Selected Variables	State Percentile	EPA Region Percentile	USA Percentile
Environmental Justice Indexes			
EJ Index for Particulate Matter 2.5	23	20	27
EJ Index for Ozone	24	19	29
EJ Index for 2017 Diesel Particulate Matter*	29	25	39
EJ Index for 2017 Air Toxics Cancer Risk*	22	21	27
EJ Index for 2017 Air Toxics Respiratory HI*	28	24	32
EJ Index for Traffic Proximity	36	31	45
EJ Index for Lead Paint	15	11	33
EJ Index for Superfund Proximity	9	10	23
EJ Index for RMP Facility Proximity	25	20	29
EJ Index for Hazardous Waste Proximity	27	21	36
EJ Index for Underground Storage Tanks	25	21	33
EJ Index for Wastewater Discharge	28	24	33



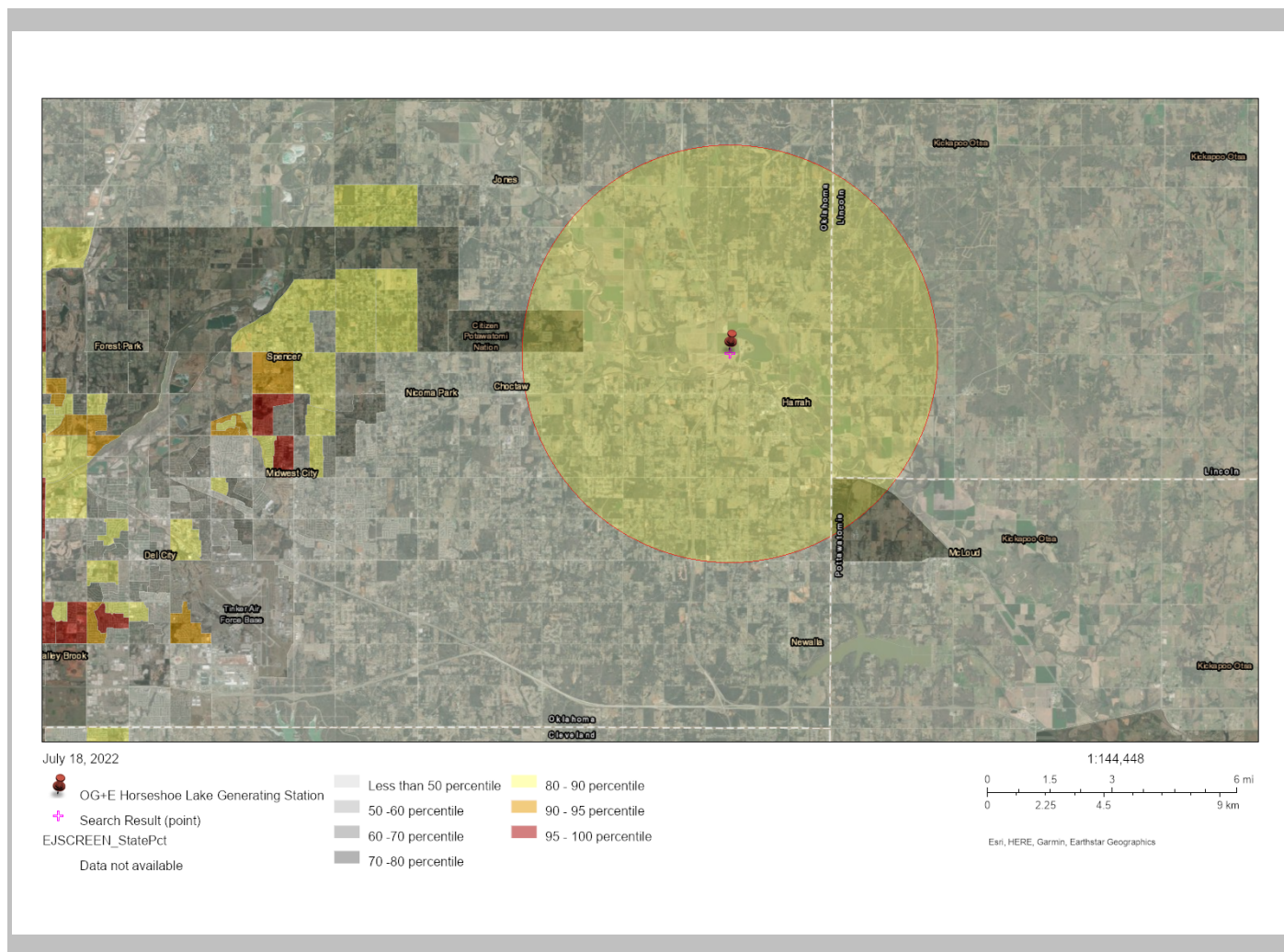
This report shows the values for environmental and demographic indicators and EJSCREEN indexes. It shows environmental and demographic raw data (e.g., the estimated concentration of ozone in the air), and also shows what percentile each raw data value represents. These percentiles provide perspective on how the selected block group or buffer area compares to the entire state, EPA region, or nation. For example, if a given location is at the 95th percentile nationwide, this means that only 5 percent of the US population has a higher block group value than the average person in the location being analyzed. The years for which the data are available, and the methods used, vary across these indicators. Important caveats and uncertainties apply to this screening-level information, so it is essential to understand the limitations on appropriate interpretations and applications of these indicators. Please see EJSCREEN documentation for discussion of these issues before using reports.

5 miles Ring Centered at 35.506956,-97.184749, OKLAHOMA, EPA Region 6

Approximate Population: 18,501

Input Area (sq. miles): 78.53

OG+E Horseshoe Lake Generating Station



Sites reporting to EPA	
Superfund NPL	0
Hazardous Waste Treatment, Storage, and Disposal Facilities (TSDF)	0

EJScreen Report (Version 2.0)

5 miles Ring Centered at 35.506956,-97.184749, OKLAHOMA, EPA Region 6

Approximate Population: 18,501

Input Area (sq. miles): 78.53

OG+E Horseshoe Lake Generating Station

Selected Variables	Value	State Avg.	%ile in State	EPA Region Avg.	%ile in EPA Region	USA Avg.	%ile in USA
Pollution and Sources							
Particulate Matter 2.5 ($\mu\text{g}/\text{m}^3$)	9.55	9.66	40	9.32	47	8.74	75
Ozone (ppb)	45.7	45.9	47	41.1	78	42.6	80
2017 Diesel Particulate Matter* ($\mu\text{g}/\text{m}^3$)	0.126	0.195	32	0.219	<50th	0.295	<50th
2017 Air Toxics Cancer Risk* (lifetime risk per million)	29	29	82	32	70-80th	29	70-80th
2017 Air Toxics Respiratory HI*	0.3	0.39	25	0.37	<50th	0.36	<50th
Traffic Proximity (daily traffic count/distance to road)	33	220	26	470	16	710	17
Lead Paint (% Pre-1960 Housing)	0.13	0.23	52	0.16	64	0.28	44
Superfund Proximity (site count/km distance)	0.078	0.05	88	0.08	72	0.13	57
RMP Facility Proximity (facility count/km distance)	0.3	0.57	51	0.83	44	0.75	49
Hazardous Waste Proximity (facility count/km distance)	0.23	0.84	43	0.8	45	2.2	33
Underground Storage Tanks (count/km ²)	0.38	1.5	41	2	32	3.9	33
Wastewater Discharge (toxicity-weighted concentration/m distance)	0.00076	0.09	56	0.5	45	12	47
Socioeconomic Indicators							
Demographic Index	23%	36%	25	44%	20	36%	37
People of Color	17%	34%	15	52%	14	40%	32
Low Income	29%	37%	38	36%	42	31%	52
Unemployment Rate	4%	5%	49	5%	49	5%	50
Linguistically Isolated	1%	2%	57	6%	38	5%	46
Less Than High School Education	9%	12%	47	15%	41	12%	52
Under Age 5	6%	7%	42	7%	42	6%	51
Over Age 64	18%	15%	67	13%	75	16%	66

*Diesel particulate matter, air toxics cancer risk, and air toxics respiratory hazard index are from the EPA's 2017 Air Toxics Data Update, which is the Agency's ongoing, comprehensive evaluation of air toxics in the United States. This effort aims to prioritize air toxics, emission sources, and locations of interest for further study. It is important to remember that the air toxics data presented here provide broad estimates of health risks over geographic areas of the country, not definitive risks to specific individuals or locations. Cancer risks and hazard indices from the Air Toxics Data Update are reported to one significant figure and any additional significant figures here are due to rounding. More information on the Air Toxics Data Update can be found at: <https://www.epa.gov/haps/air-toxics-data-update>.

For additional information, see: www.epa.gov/environmentaljustice

EJScreen is a screening tool for pre-decisional use only. It can help identify areas that may warrant additional consideration, analysis, or outreach. It does not provide a basis for decision-making, but it may help identify potential areas of EJ concern. Users should keep in mind that screening tools are subject to substantial uncertainty in their demographic and environmental data, particularly when looking at small geographic areas. Important caveats and uncertainties apply to this screening-level information, so it is essential to understand the limitations on appropriate interpretations and applications of these indicators. Please see EJScreen documentation for discussion of these issues before using reports. This screening tool does not provide data on every environmental impact and demographic factor that may be relevant to a particular location. EJScreen outputs should be supplemented with additional information and local knowledge before taking any action to address potential EJ concerns.

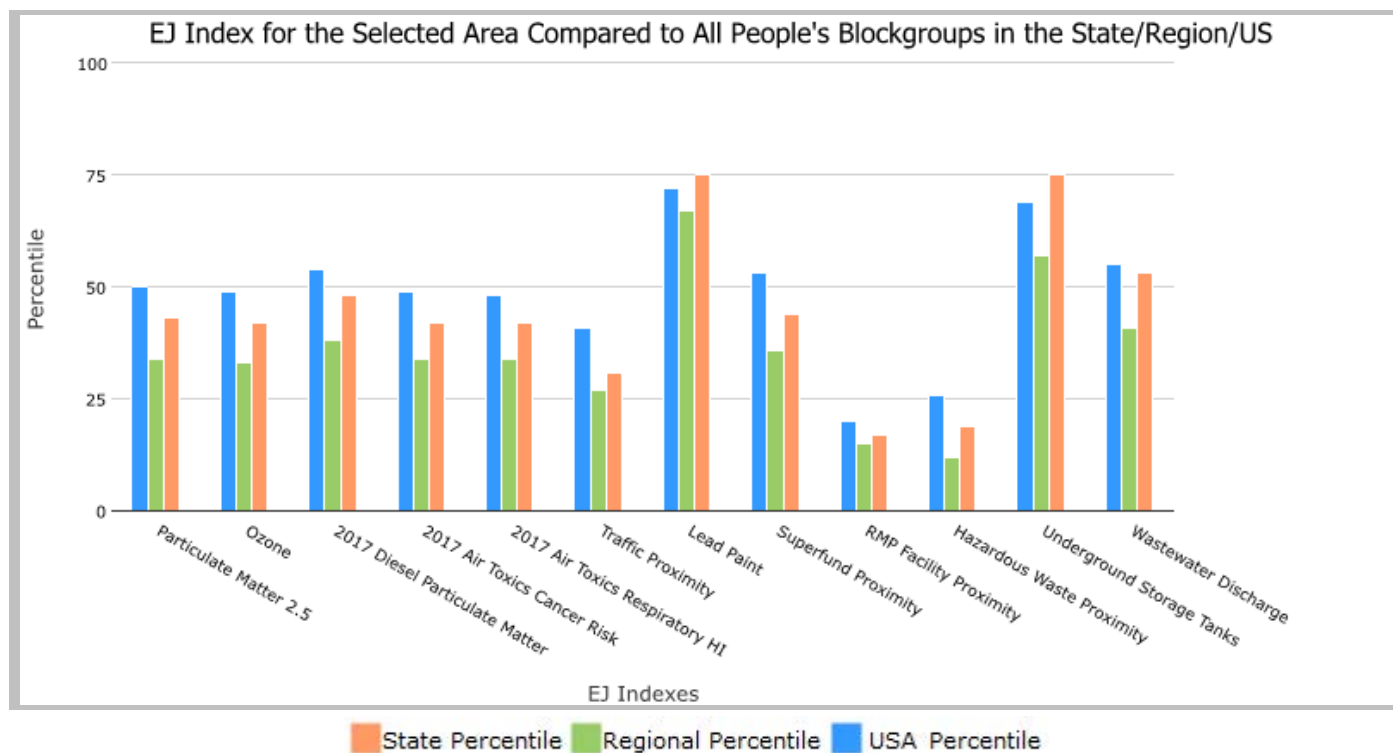
5 miles Ring Centered at 35.474326,-97.673261, OKLAHOMA, EPA Region 6

Approximate Population: 131,060

Input Area (sq. miles): 78.53

OG+E Mustang Energy Center

Selected Variables	State Percentile	EPA Region Percentile	USA Percentile
Environmental Justice Indexes			
EJ Index for Particulate Matter 2.5	43	34	50
EJ Index for Ozone	42	33	49
EJ Index for 2017 Diesel Particulate Matter*	48	38	54
EJ Index for 2017 Air Toxics Cancer Risk*	42	34	49
EJ Index for 2017 Air Toxics Respiratory HI*	42	34	48
EJ Index for Traffic Proximity	31	27	41
EJ Index for Lead Paint	75	67	72
EJ Index for Superfund Proximity	44	36	53
EJ Index for RMP Facility Proximity	17	15	20
EJ Index for Hazardous Waste Proximity	19	12	26
EJ Index for Underground Storage Tanks	75	57	69
EJ Index for Wastewater Discharge	53	41	55



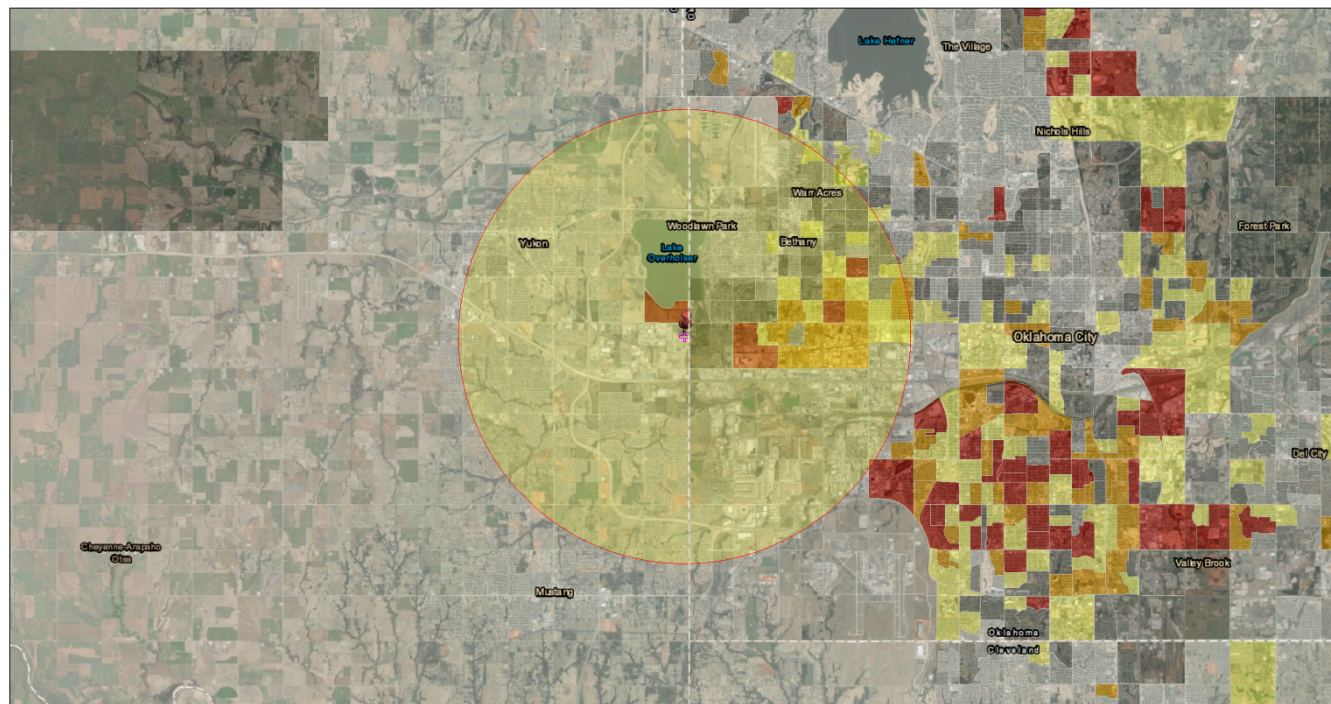
This report shows the values for environmental and demographic indicators and EJSCREEN indexes. It shows environmental and demographic raw data (e.g., the estimated concentration of ozone in the air), and also shows what percentile each raw data value represents. These percentiles provide perspective on how the selected block group or buffer area compares to the entire state, EPA region, or nation. For example, if a given location is at the 95th percentile nationwide, this means that only 5 percent of the US population has a higher block group value than the average person in the location being analyzed. The years for which the data are available, and the methods used, vary across these indicators. Important caveats and uncertainties apply to this screening-level information, so it is essential to understand the limitations on appropriate interpretations and applications of these indicators. Please see EJSCREEN documentation for discussion of these issues before using reports.

5 miles Ring Centered at 35.474326,-97.673261, OKLAHOMA, EPA Region 6

Approximate Population: 131,060

Input Area (sq. miles): 78.53

OG+E Mustang Energy Center



July 18, 2022

- OG+E Mustang Energy Center
- Search Result (point)
- EJSCREEN_StatePct
- Data not available
- Less than 50 percentile
- 50 -60 percentile
- 60 -70 percentile
- 70 -80 percentile
- 80 - 90 percentile
- 90 - 95 percentile
- 95 - 100 percentile

1:144,448
0 1.5 3 6 mi
0 2.25 4.5 9 km
Esri, HERE, Garmin, Earthstar Geographics

Sites reporting to EPA

Superfund NPL	0
Hazardous Waste Treatment, Storage, and Disposal Facilities (TSDF)	12

EJScreen Report (Version 2.0)

5 miles Ring Centered at 35.474326,-97.673261, OKLAHOMA, EPA Region 6

Approximate Population: 131,060

Input Area (sq. miles): 78.53

OG+E Mustang Energy Center

Selected Variables	Value	State Avg.	%ile in State	EPA Region Avg.	%ile in EPA Region	USA Avg.	%ile in USA
Pollution and Sources							
Particulate Matter 2.5 ($\mu\text{g}/\text{m}^3$)	9.84	9.66	58	9.32	66	8.74	81
Ozone (ppb)	48.6	45.9	93	41.1	89	42.6	86
2017 Diesel Particulate Matter* ($\mu\text{g}/\text{m}^3$)	0.258	0.195	73	0.219	60-70th	0.295	50-60th
2017 Air Toxics Cancer Risk* (lifetime risk per million)	30	29	88	32	70-80th	29	80-90th
2017 Air Toxics Respiratory HI*	0.4	0.39	79	0.37	80-90th	0.36	80-90th
Traffic Proximity (daily traffic count/distance to road)	160	220	70	470	45	710	42
Lead Paint (% Pre-1960 Housing)	0.18	0.23	60	0.16	70	0.28	50
Superfund Proximity (site count/km distance)	0.04	0.05	65	0.08	49	0.13	34
RMP Facility Proximity (facility count/km distance)	0.93	0.57	80	0.83	71	0.75	74
Hazardous Waste Proximity (facility count/km distance)	1.7	0.84	81	0.8	85	2.2	67
Underground Storage Tanks (count/km ²)	2.7	1.5	81	2	73	3.9	65
Wastewater Discharge (toxicity-weighted concentration/m distance)	2E-06	0.09	9	0.5	6	12	11
Socioeconomic Indicators							
Demographic Index	36%	36%	59	44%	43	36%	59
People of Color	37%	34%	66	52%	37	40%	55
Low Income	35%	37%	49	36%	52	31%	62
Unemployment Rate	5%	5%	53	5%	53	5%	53
Linguistically Isolated	4%	2%	84	6%	59	5%	67
Less Than High School Education	12%	12%	57	15%	49	12%	61
Under Age 5	7%	7%	64	7%	58	6%	67
Over Age 64	13%	15%	39	13%	56	16%	45

*Diesel particulate matter, air toxics cancer risk, and air toxics respiratory hazard index are from the EPA's 2017 Air Toxics Data Update, which is the Agency's ongoing, comprehensive evaluation of air toxics in the United States. This effort aims to prioritize air toxics, emission sources, and locations of interest for further study. It is important to remember that the air toxics data presented here provide broad estimates of health risks over geographic areas of the country, not definitive risks to specific individuals or locations. Cancer risks and hazard indices from the Air Toxics Data Update are reported to one significant figure and any additional significant figures here are due to rounding. More information on the Air Toxics Data Update can be found at: <https://www.epa.gov/haps/air-toxics-data-update>.

For additional information, see: www.epa.gov/environmentaljustice

EJScreen is a screening tool for pre-decisional use only. It can help identify areas that may warrant additional consideration, analysis, or outreach. It does not provide a basis for decision-making, but it may help identify potential areas of EJ concern. Users should keep in mind that screening tools are subject to substantial uncertainty in their demographic and environmental data, particularly when looking at small geographic areas. Important caveats and uncertainties apply to this screening-level information, so it is essential to understand the limitations on appropriate interpretations and applications of these indicators. Please see EJScreen documentation for discussion of these issues before using reports. This screening tool does not provide data on every environmental impact and demographic factor that may be relevant to a particular location. EJScreen outputs should be supplemented with additional information and local knowledge before taking any action to address potential EJ concerns.

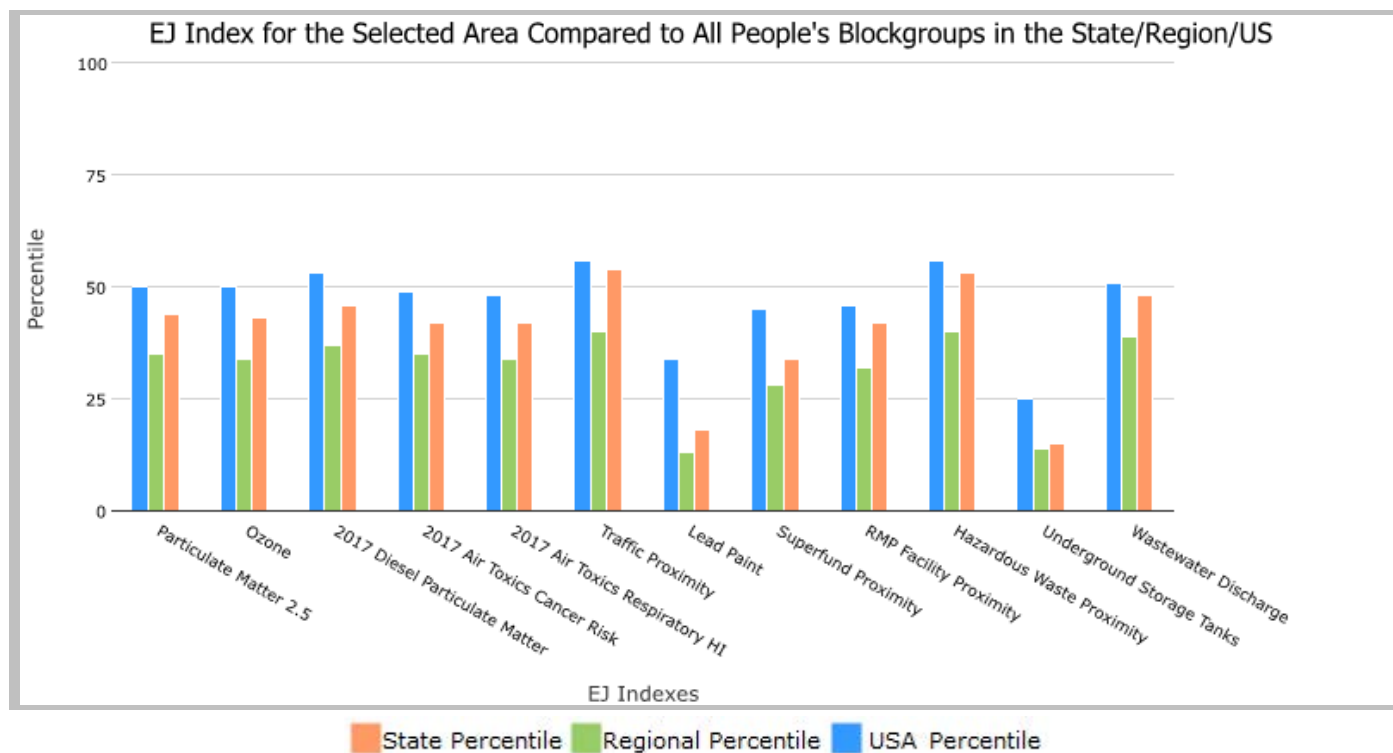
5 miles Ring Centered at 34.847581,-97.562779, OKLAHOMA, EPA Region 6

Approximate Population: 4,182

Input Area (sq. miles): 78.53

ONEOK Field Services Co LLC Lindsay Booster Station

Selected Variables	State Percentile	EPA Region Percentile	USA Percentile
Environmental Justice Indexes			
EJ Index for Particulate Matter 2.5	44	35	50
EJ Index for Ozone	43	34	50
EJ Index for 2017 Diesel Particulate Matter*	46	37	53
EJ Index for 2017 Air Toxics Cancer Risk*	42	35	49
EJ Index for 2017 Air Toxics Respiratory HI*	42	34	48
EJ Index for Traffic Proximity	54	40	56
EJ Index for Lead Paint	18	13	34
EJ Index for Superfund Proximity	34	28	45
EJ Index for RMP Facility Proximity	42	32	46
EJ Index for Hazardous Waste Proximity	53	40	56
EJ Index for Underground Storage Tanks	15	14	25
EJ Index for Wastewater Discharge	48	39	51



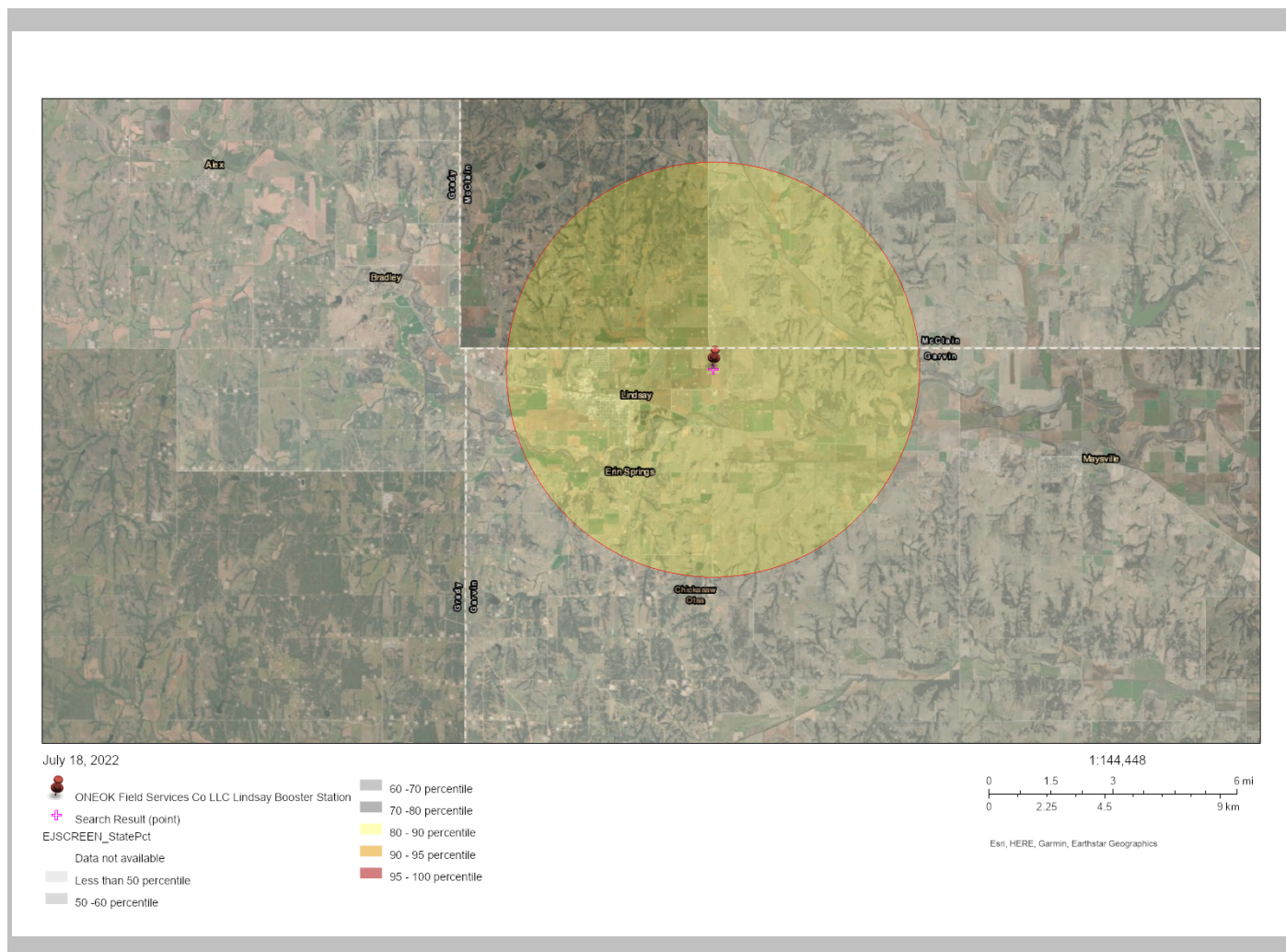
This report shows the values for environmental and demographic indicators and EJSCREEN indexes. It shows environmental and demographic raw data (e.g., the estimated concentration of ozone in the air), and also shows what percentile each raw data value represents. These percentiles provide perspective on how the selected block group or buffer area compares to the entire state, EPA region, or nation. For example, if a given location is at the 95th percentile nationwide, this means that only 5 percent of the US population has a higher block group value than the average person in the location being analyzed. The years for which the data are available, and the methods used, vary across these indicators. Important caveats and uncertainties apply to this screening-level information, so it is essential to understand the limitations on appropriate interpretations and applications of these indicators. Please see EJSCREEN documentation for discussion of these issues before using reports.

5 miles Ring Centered at 34.847581,-97.562779, OKLAHOMA, EPA Region 6

Approximate Population: 4,182

Input Area (sq. miles): 78.53

ONEOK Field Services Co LLC Lindsay Booster Station



Sites reporting to EPA	
Superfund NPL	0
Hazardous Waste Treatment, Storage, and Disposal Facilities (TSDF)	0

EJScreen Report (Version 2.0)

5 miles Ring Centered at 34.847581,-97.562779, OKLAHOMA, EPA Region 6

Approximate Population: 4,182

Input Area (sq. miles): 78.53

ONEOK Field Services Co LLC Lindsay Booster Station

Selected Variables	Value	State Avg.	%ile in State	EPA Region Avg.	%ile in EPA Region	USA Avg.	%ile in USA
Pollution and Sources							
Particulate Matter 2.5 ($\mu\text{g}/\text{m}^3$)	9.14	9.66	17	9.32	25	8.74	65
Ozone (ppb)	47.1	45.9	58	41.1	83	42.6	84
2017 Diesel Particulate Matter* ($\mu\text{g}/\text{m}^3$)	0.104	0.195	22	0.219	<50th	0.295	<50th
2017 Air Toxics Cancer Risk* (lifetime risk per million)	30	29	88	32	70-80th	29	80-90th
2017 Air Toxics Respiratory HI*	0.39	0.39	74	0.37	80-90th	0.36	70-80th
Traffic Proximity (daily traffic count/distance to road)	0.27	220	1	470	0	710	1
Lead Paint (% Pre-1960 Housing)	0.29	0.23	72	0.16	80	0.28	62
Superfund Proximity (site count/km distance)	0.068	0.05	85	0.08	68	0.13	53
RMP Facility Proximity (facility count/km distance)	0.16	0.57	28	0.83	26	0.75	30
Hazardous Waste Proximity (facility count/km distance)	0.026	0.84	5	0.8	4	2.2	2
Underground Storage Tanks (count/km ²)	3.5	1.5	87	2	80	3.9	70
Wastewater Discharge (toxicity-weighted concentration/m distance)	6.9E-06	0.09	17	0.5	10	12	16
Socioeconomic Indicators							
Demographic Index	27%	36%	36	44%	28	36%	45
People of Color	20%	34%	20	52%	16	40%	35
Low Income	35%	37%	49	36%	52	31%	62
Unemployment Rate	2%	5%	26	5%	28	5%	28
Linguistically Isolated	0%	2%	55	6%	37	5%	45
Less Than High School Education	13%	12%	63	15%	53	12%	64
Under Age 5	6%	7%	38	7%	39	6%	48
Over Age 64	19%	15%	73	13%	79	16%	71

*Diesel particulate matter, air toxics cancer risk, and air toxics respiratory hazard index are from the EPA's 2017 Air Toxics Data Update, which is the Agency's ongoing, comprehensive evaluation of air toxics in the United States. This effort aims to prioritize air toxics, emission sources, and locations of interest for further study. It is important to remember that the air toxics data presented here provide broad estimates of health risks over geographic areas of the country, not definitive risks to specific individuals or locations. Cancer risks and hazard indices from the Air Toxics Data Update are reported to one significant figure and any additional significant figures here are due to rounding. More information on the Air Toxics Data Update can be found at: <https://www.epa.gov/haps/air-toxics-data-update>.

For additional information, see: www.epa.gov/environmentaljustice

EJScreen is a screening tool for pre-decisional use only. It can help identify areas that may warrant additional consideration, analysis, or outreach. It does not provide a basis for decision-making, but it may help identify potential areas of EJ concern. Users should keep in mind that screening tools are subject to substantial uncertainty in their demographic and environmental data, particularly when looking at small geographic areas. Important caveats and uncertainties apply to this screening-level information, so it is essential to understand the limitations on appropriate interpretations and applications of these indicators. Please see EJScreen documentation for discussion of these issues before using reports. This screening tool does not provide data on every environmental impact and demographic factor that may be relevant to a particular location. EJScreen outputs should be supplemented with additional information and local knowledge before taking any action to address potential EJ concerns.

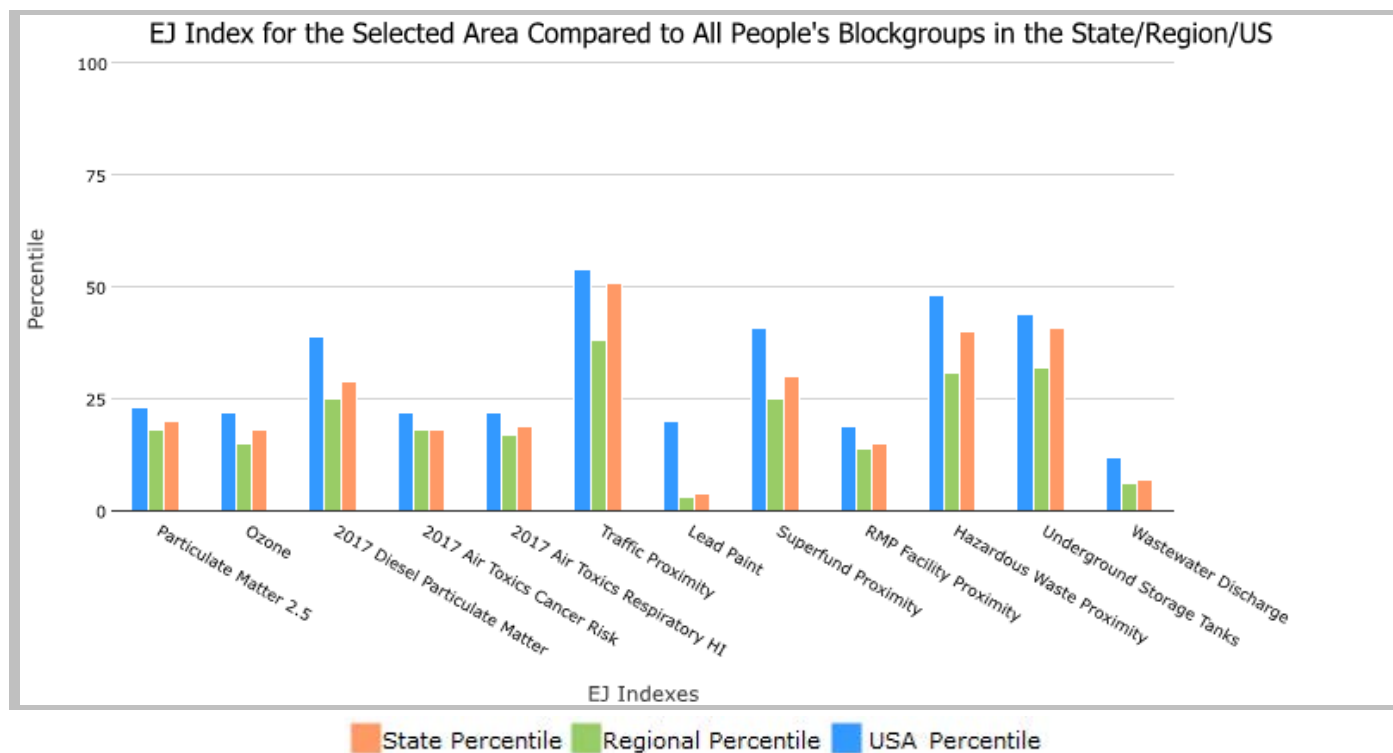
5 miles Ring Centered at 35.791773,-97.745415, OKLAHOMA, EPA Region 6

Approximate Population: 1,595

Input Area (sq. miles): 78.53

Panhandle Eastern Pipeline Co Cashion Compressor Station

Selected Variables	State Percentile	EPA Region Percentile	USA Percentile
Environmental Justice Indexes			
EJ Index for Particulate Matter 2.5	20	18	23
EJ Index for Ozone	18	15	22
EJ Index for 2017 Diesel Particulate Matter*	29	25	39
EJ Index for 2017 Air Toxics Cancer Risk*	18	18	22
EJ Index for 2017 Air Toxics Respiratory HI*	19	17	22
EJ Index for Traffic Proximity	51	38	54
EJ Index for Lead Paint	4	3	20
EJ Index for Superfund Proximity	30	25	41
EJ Index for RMP Facility Proximity	15	14	19
EJ Index for Hazardous Waste Proximity	40	31	48
EJ Index for Underground Storage Tanks	41	32	44
EJ Index for Wastewater Discharge	7	6	12



This report shows the values for environmental and demographic indicators and EJSCREEN indexes. It shows environmental and demographic raw data (e.g., the estimated concentration of ozone in the air), and also shows what percentile each raw data value represents. These percentiles provide perspective on how the selected block group or buffer area compares to the entire state, EPA region, or nation. For example, if a given location is at the 95th percentile nationwide, this means that only 5 percent of the US population has a higher block group value than the average person in the location being analyzed. The years for which the data are available, and the methods used, vary across these indicators. Important caveats and uncertainties apply to this screening-level information, so it is essential to understand the limitations on appropriate interpretations and applications of these indicators. Please see EJSCREEN documentation for discussion of these issues before using reports.

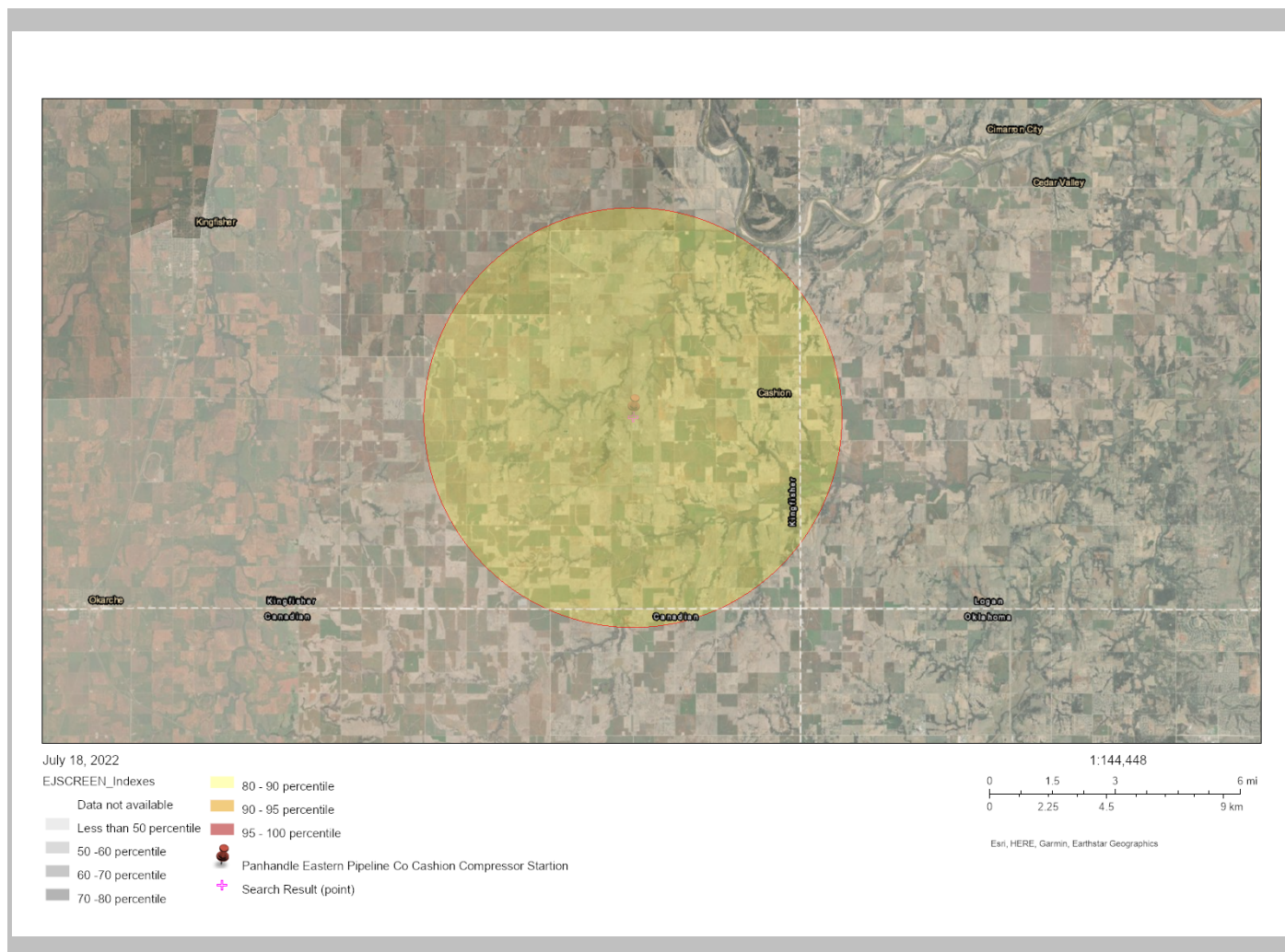
EJScreen Report (Version 2.0)

5 miles Ring Centered at 35.791773,-97.745415, OKLAHOMA, EPA Region 6

Approximate Population: 1,595

Input Area (sq. miles): 78.53

Panhandle Eastern Pipeline Co Cashion Compressor Station



Sites reporting to EPA

Superfund NPL

0

Hazardous Waste Treatment, Storage, and Disposal Facilities (TSDF)

0

EJScreen Report (Version 2.0)

5 miles Ring Centered at 35.791773,-97.745415, OKLAHOMA, EPA Region 6

Approximate Population: 1,595

Input Area (sq. miles): 78.53

Panhandle Eastern Pipeline Co Cashion Compressor Station

Selected Variables	Value	State Avg.	%ile in State	EPA Region Avg.	%ile in EPA Region	USA Avg.	%ile in USA
Pollution and Sources							
Particulate Matter 2.5 ($\mu\text{g}/\text{m}^3$)	9.22	9.66	19	9.32	28	8.74	67
Ozone (ppb)	48.3	45.9	86	41.1	88	42.6	86
2017 Diesel Particulate Matter* ($\mu\text{g}/\text{m}^3$)	0.0984	0.195	19	0.219	<50th	0.295	<50th
2017 Air Toxics Cancer Risk* (lifetime risk per million)	30	29	88	32	70-80th	29	80-90th
2017 Air Toxics Respiratory HI*	0.38	0.39	69	0.37	70-80th	0.36	70-80th
Traffic Proximity (daily traffic count/distance to road)	5.6	220	9	470	4	710	5
Lead Paint (% Pre-1960 Housing)	0.22	0.23	65	0.16	75	0.28	55
Superfund Proximity (site count/km distance)	0.02	0.05	27	0.08	27	0.13	17
RMP Facility Proximity (facility count/km distance)	0.41	0.57	60	0.83	51	0.75	55
Hazardous Waste Proximity (facility count/km distance)	0.053	0.84	19	0.8	12	2.2	7
Underground Storage Tanks (count/km ²)	0.025	1.5	16	2	14	3.9	18
Wastewater Discharge (toxicity-weighted concentration/m distance)	0.014	0.09	83	0.5	78	12	72
Socioeconomic Indicators							
Demographic Index	15%	36%	7	44%	8	36%	20
People of Color	11%	34%	4	52%	7	40%	22
Low Income	20%	37%	21	36%	26	31%	35
Unemployment Rate	3%	5%	31	5%	33	5%	33
Linguistically Isolated	2%	2%	75	6%	50	5%	58
Less Than High School Education	9%	12%	43	15%	38	12%	49
Under Age 5	5%	7%	36	7%	38	6%	46
Over Age 64	19%	15%	71	13%	77	16%	69

*Diesel particulate matter, air toxics cancer risk, and air toxics respiratory hazard index are from the EPA's 2017 Air Toxics Data Update, which is the Agency's ongoing, comprehensive evaluation of air toxics in the United States. This effort aims to prioritize air toxics, emission sources, and locations of interest for further study. It is important to remember that the air toxics data presented here provide broad estimates of health risks over geographic areas of the country, not definitive risks to specific individuals or locations. Cancer risks and hazard indices from the Air Toxics Data Update are reported to one significant figure and any additional significant figures here are due to rounding. More information on the Air Toxics Data Update can be found at: <https://www.epa.gov/haps/air-toxics-data-update>.

For additional information, see: www.epa.gov/environmentaljustice

EJScreen is a screening tool for pre-decisional use only. It can help identify areas that may warrant additional consideration, analysis, or outreach. It does not provide a basis for decision-making, but it may help identify potential areas of EJ concern. Users should keep in mind that screening tools are subject to substantial uncertainty in their demographic and environmental data, particularly when looking at small geographic areas. Important caveats and uncertainties apply to this screening-level information, so it is essential to understand the limitations on appropriate interpretations and applications of these indicators. Please see EJScreen documentation for discussion of these issues before using reports. This screening tool does not provide data on every environmental impact and demographic factor that may be relevant to a particular location. EJScreen outputs should be supplemented with additional information and local knowledge before taking any action to address potential EJ concerns.