

## Brownfields Assessments and Services

### What is a Targeted Brownfields Assessment (TBA)?

A TBA is a property assessment that can be tailored to the participant's needs. It can be a Phase I Environmental Site Assessment (ESA) (also known as All Appropriate Inquiry), a Phase II Environmental Site Assessment (a sampling assessment), an asbestos survey, etc.

A Phase I ESA is an examination of the environmental history of a piece of property and summarized in a written report. It is often a part of commercial property acquisitions and is performed prior to the transfer of property. Its purpose is to identify potential contamination and to help protect property purchasers from federal Superfund liability. Banks often require these reports prior to agreeing to provide loans for the purchase of commercial/industrial properties. They are often referred to in the real estate industry as environmental due diligence.

A Phase I ESA is a prerequisite for DEQ and EPA Brownfield Cleanup Grants.

A Phase II ESA is often performed when a Phase I identifies Recognized Environmental Conditions and is used to determine if actual contamination exists. Phase IIs include the collection and analysis of environmental samples. TBAs can also be used for lead and asbestos surveys or other types of environmental assessments.

### Who is eligible to apply for a Department of Environmental Quality TBA?

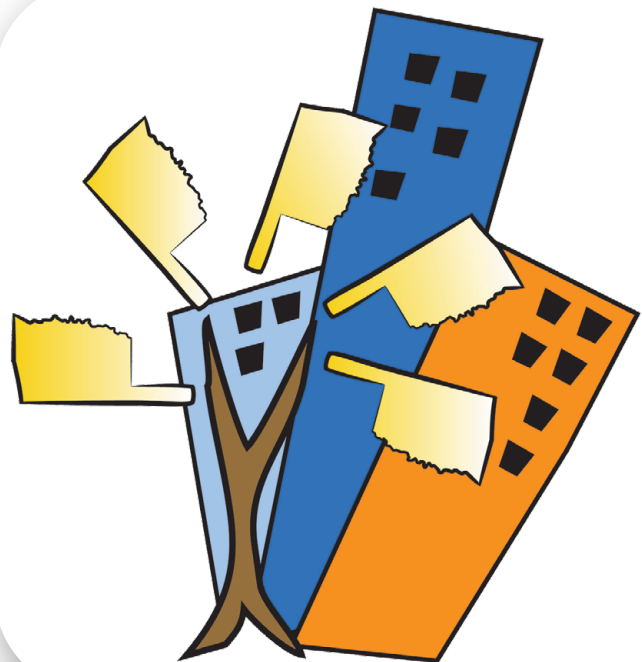
Eligible entities include public and nonprofit entities such as municipalities, tribes, and community development organizations interested in redeveloping abandoned or under used properties. TBAs are performed at sites that have concrete reuse plans and where the environmental conditions are unknown.

### TBA Cost:

There is no cost to the participant.

### DEQ Brownfields Services Include:

- Technical Services - Assistance is always tailored to the specific needs of a community.



## DEQ Services (continued):

Examples of services:

- Guidance through the brownfields process and assistance with planning environmental work
- Identification of potential funding sources
- Review of draft EPA Brownfields grant applications
- Liaison between communities and state or federal agencies or other entities
- Assistance with the process of hiring an environmental consultant
- Review and interpretation of technical documents

## Contact:

### **Sam Hooker**

TBA Coordinator

[sam.hooker@deq.ok.gov](mailto:sam.hooker@deq.ok.gov)

707 N. Robinson, PO Box 1677

Oklahoma City, OK 73101

(405) 702-5117

### **DEQ Land Protection Division**

Brownfields Program:

<https://go.usa.gov/xVgWA>

Oklahoma Brownfields Conference:

[www.oklahomabrownfields.com](http://www.oklahomabrownfields.com)